



36 Linkscroft Avenue, Ashford, TW15 2BE

Welcome to this charming property located on Linkscroft Avenue in the lovely town of Ashford. This delightful house boasts a spacious 1,033 sq ft of living space, perfect for a family looking for a new home.

This property exudes character and charm while offering modern amenities for comfortable living. With three cosy bedrooms, there is ample space for a growing family or for those in need of a home office or guest room.

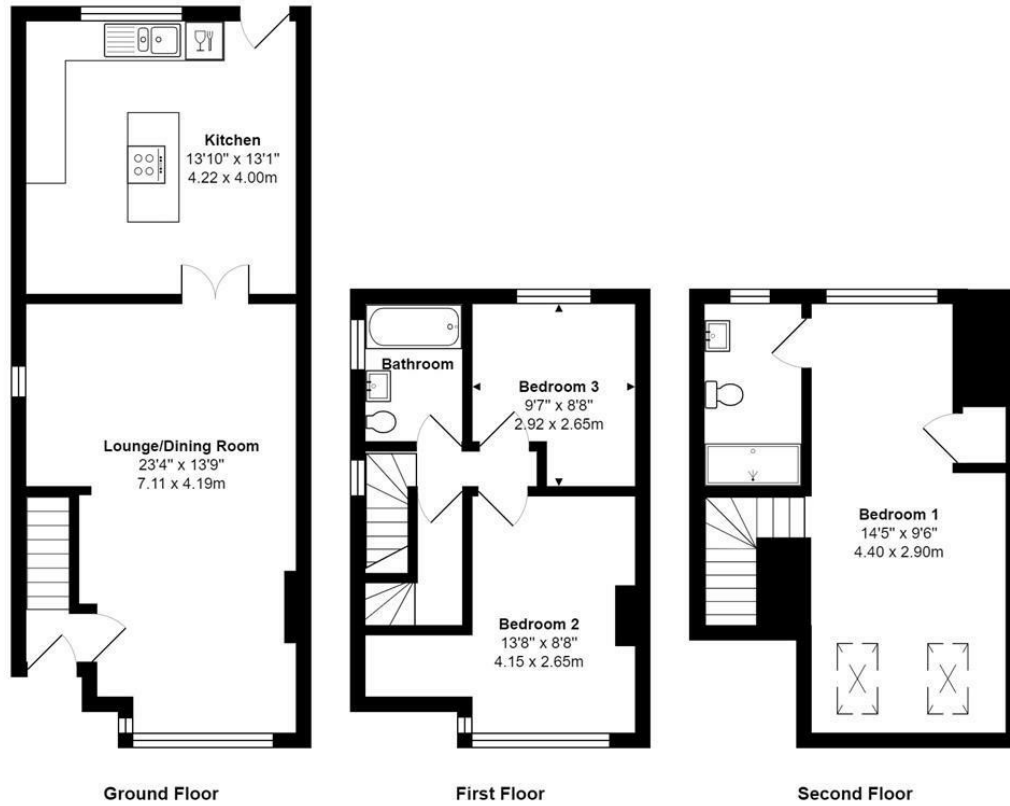
The house features not just one, but two bathrooms, ensuring convenience and privacy for all residents. The living/dining room is a versatile space that can be easily adapted to suit your lifestyle, whether it's for relaxing with family or entertaining guests.

Parking is always a plus, and this property offers just that, making your daily commute or trips to the town hassle-free. The garden provides a lovely outdoor space where you can unwind, enjoy a cup of tea, or even let your pets roam around freely.

Don't miss out on the opportunity to make this house your home. Contact us today to arrange a viewing and envision the wonderful possibilities that this property on Linkscroft Avenue has to offer.



Floor Plan



Linkscroft Avenue, Ashford, TW15 2BE

Total Area: 1058 ft² ... 98.3 m²

All measurements are approximate and for display purposes only



Features

- Extended 3 bedroom semi-detached house
- Off-Road parking
- Well presented
- Popular residential location
- Private rear garden
- Two bathrooms

Aspen Residential Services
 77 Church Road, Ashford, Surrey, TW15 2PE
 Tel: 01784 252 202
 Email: enquiries@aspensalesandlettings.com





A
ASPEN
SALES & LETTINGS