



7 The Foundry Woodthorpe Road, Ashford, TW15 2AZ

£269,950

7 The Foundry Woodthorpe Road, Ashford, TW15 2AZ

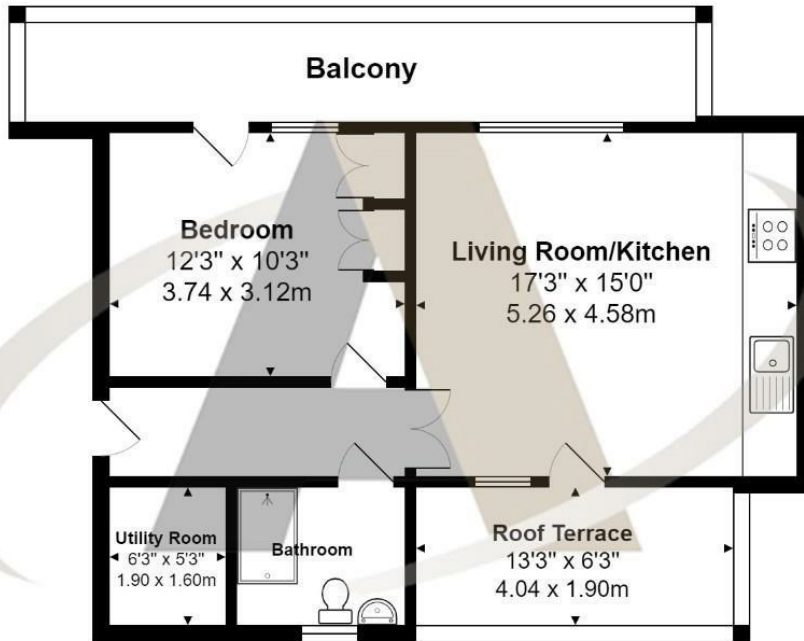
This immaculate one-bedroom top-floor flat in The Foundry, Ashford, built in by renowned housebuilders, Cleanslate in 2019, offers more space than typical homes of its kind. The modern, open-plan layout features a high-end kitchen that flows seamlessly into a bright and airy lounge, opening up to a private terrace. The generously sized bedroom offers a tranquil retreat with its own balcony, perfect for relaxing. Residents benefit from secure parking, a secure entry phone system, and access to beautifully maintained communal gardens, all within the safety of a gated community, with lift access for added convenience.

Situated just off Woodthorpe Road, The Foundry enjoys a prime location with Ashford Station only a stone's throw away, making commuting effortless. The vibrant Ashford town centre is within walking distance, offering a variety of amenities including shops, cafes, and restaurants, ensuring convenience at your doorstep. This modern flat blends contemporary living with an ideal location, perfect for those seeking both comfort and accessibility.



Floor Plan

7, The Foundry, 35a, Woodthorpe Road, Ashford, TW15 2AZ



Total Area: 825 ft² ... 76.7 m²

All measurements are approximate and for display purposes only



Features

- Double bedroom with access to balcony
- Minutes walk to the station
- Long Lease
- High Specification
- Town Centre Location
- Roof terrace
- Allocated Parking
- Lift to all floors

