



61 Marlborough Road, Ashford, TW15 3PZ

£779,950

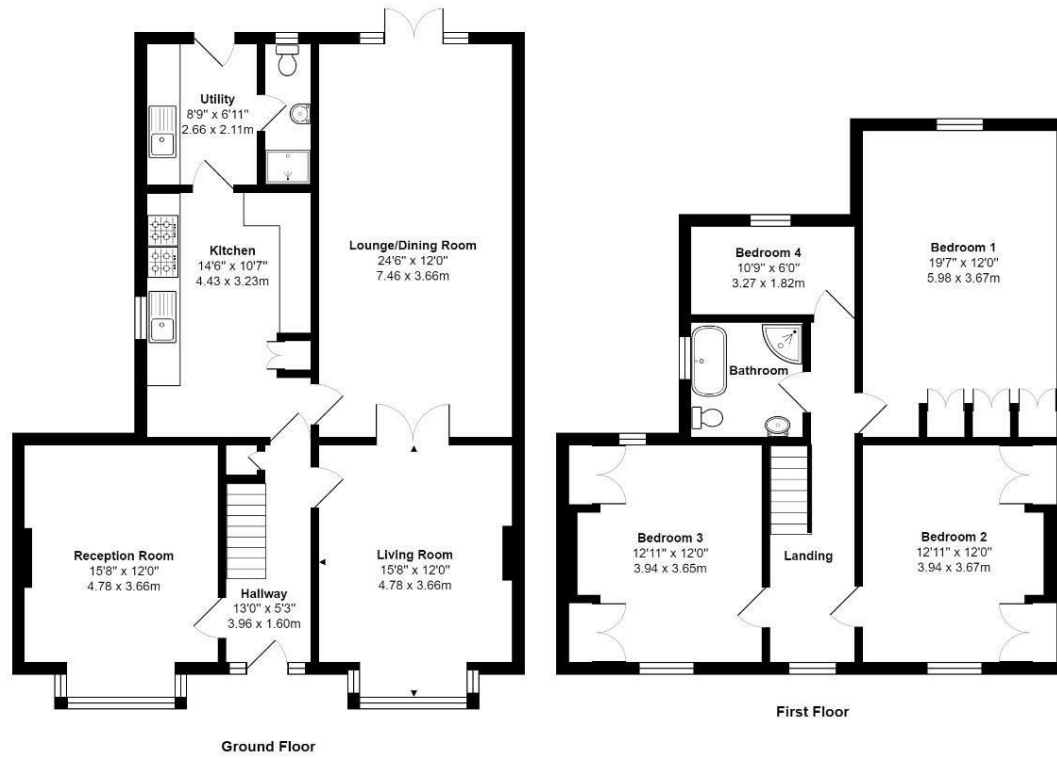
# 61 Marlborough Road, Ashford, TW15 3PZ

A unique and stunning four bedroom double fronted period family residence situated in a quiet residential location. Featuring numerous original character features both retained and restored including beautiful stain glass windows , fireplaces, balustrades and tiled flooring. Offering well proportioned accommodation over two floors the accommodation comprises four large bedrooms with a four piece family bathroom to the first floor.

The extensive ground floor enjoys three separate and spacious reception rooms with a fully fitted kitchen complimented by a utility room and ground floor shower room. Externally the property enjoys a substantial rear garden which has been well maintained with driveway parking and outbuilding. Internal Inspection Essential.



# Floor Plan



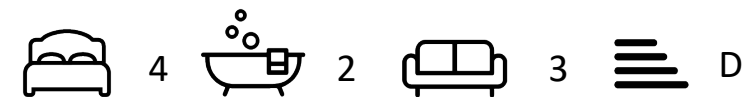
Marlborough Road, Ashford, TW15 3PZ

Total Area: 1797 ft² ... 167.0 m²

All measurements are approximate and for display purposes only



## Features



Aspen Residential Services  
 77 Church Road, Ashford, Surrey, TW15 2PE  
 Tel: 01784 252 202  
 Email: enquiries@aspensalesandlettings.com

