



6 Beatrice Court Clarendon Road, Ashford, TW15 2QE

£299,950

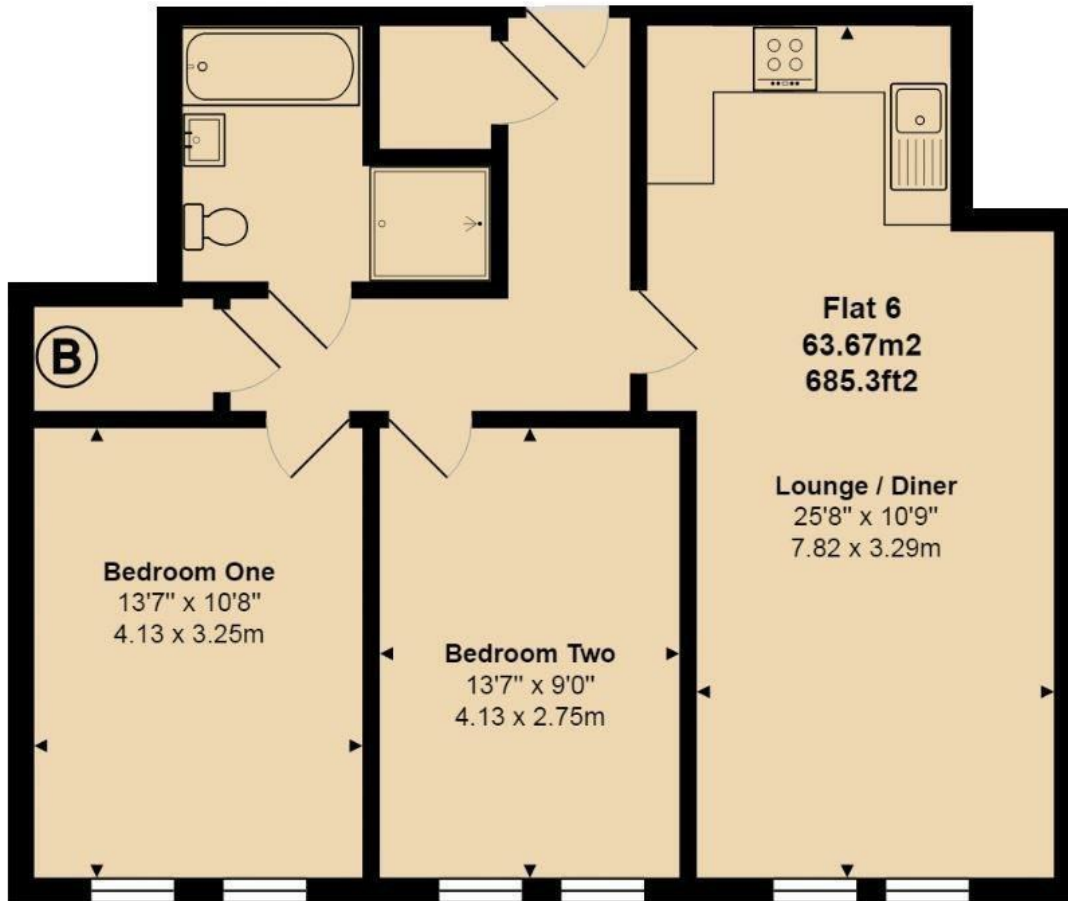
6 Beatrice Court Clarendon Road, Ashford, TW15 2QE

Beatrice Court is a stunning, recently built development by Hoopers Homes Ltd, offering a collection of just ten exclusive apartments. Ideally situated in the heart of Ashford, this property provides convenient access to local shops and the mainline station, making it perfect for those who value both comfort and connectivity. This high-quality, first-floor apartment is designed to the highest standards, featuring a luxury fitted kitchen and bathroom, a modern video entry system, and gas central heating. With the added benefit of allocated parking and beautifully maintained communal gardens, Beatrice Court offers a serene and secure living environment.

Built in 2020, this apartment showcases contemporary design and premium finishes, providing a fresh and inviting atmosphere. The property is being offered with no onward chain, ensuring a smooth and swift purchase process. Whether you are a first-time buyer, downsizing, or looking for an investment opportunity, this apartment is priced to sell, with a 120 year lease and ready for immediate occupancy. Don't miss the chance to be a part of this exclusive community. For more information or to arrange a viewing, please contact the Aspen New Homes department on 01784 252202.



Floor Plan



Features

- Beatrice Court is a recently built development by Hoopers Homes Ltd
- The first-floor apartment is designed to the highest standards
- Each apartment comes with its own allocated parking space
- The property is offered with no onward chain
- Situated in the heart of Ashford
- Equipped with a modern video entry system and gas central heating
- Enjoy access to well-maintained communal gardens
- 120-Year Lease

