



6 Christopher Court, Ashford, TW15 3QF

£319,950

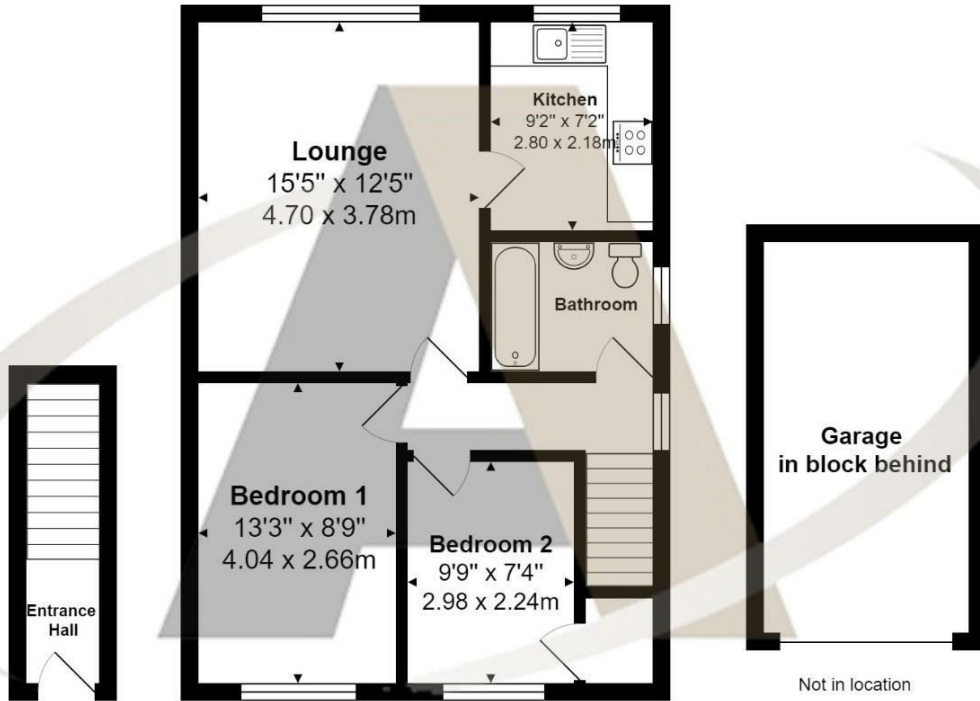
6 Christopher Court, Ashford, TW15 3QF

This very sensibly priced, immaculately presented and recently refurbished two-bedroom first-floor maisonette offers modern living in a prime location. Situated just a short walk from the station and town center, the property provides both convenience and style. The high-quality fitted kitchen features elegant beach worktops, while the modern bathroom adds a touch of luxury. Gas central heating ensures comfort throughout the year, and the well-kept front garden adds to the property's charm and appeal.

In addition to its beautiful interiors, the maisonette includes a good-sized garage in a block at the rear, providing secure storage, parking and a 150 year lease. Communal parking is also available, adding to the convenience for residents and guests. This property is perfect for buyers seeking a stylish, low-maintenance home in a desirable location, combining contemporary finishes with practical amenities. Call the vendors chosen sole agents, Aspen on 01784 252202.

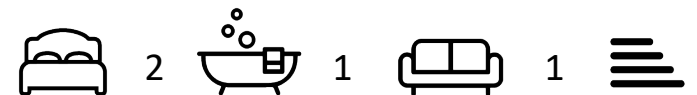


Floor Plan



Features

- Prime position, just a short walk from the station and town center
- Recently refurbished with contemporary finishes throughout
- High-quality fitted kitchen featuring elegant beach worktops
- Stylish, modern bathroom adding a touch of luxury
- Gas central heating for year-round comfort
- Well-kept front garden enhancing the property's charm
- Good-sized garage in a block at the rear for secure storage and parking
- Additional communal parking available for residents and guests





FOR SALE
ASPEN
SALES & LETTINGS

