



23a Woodthorpe Road, Ashford, TW15 2RP

£325,000



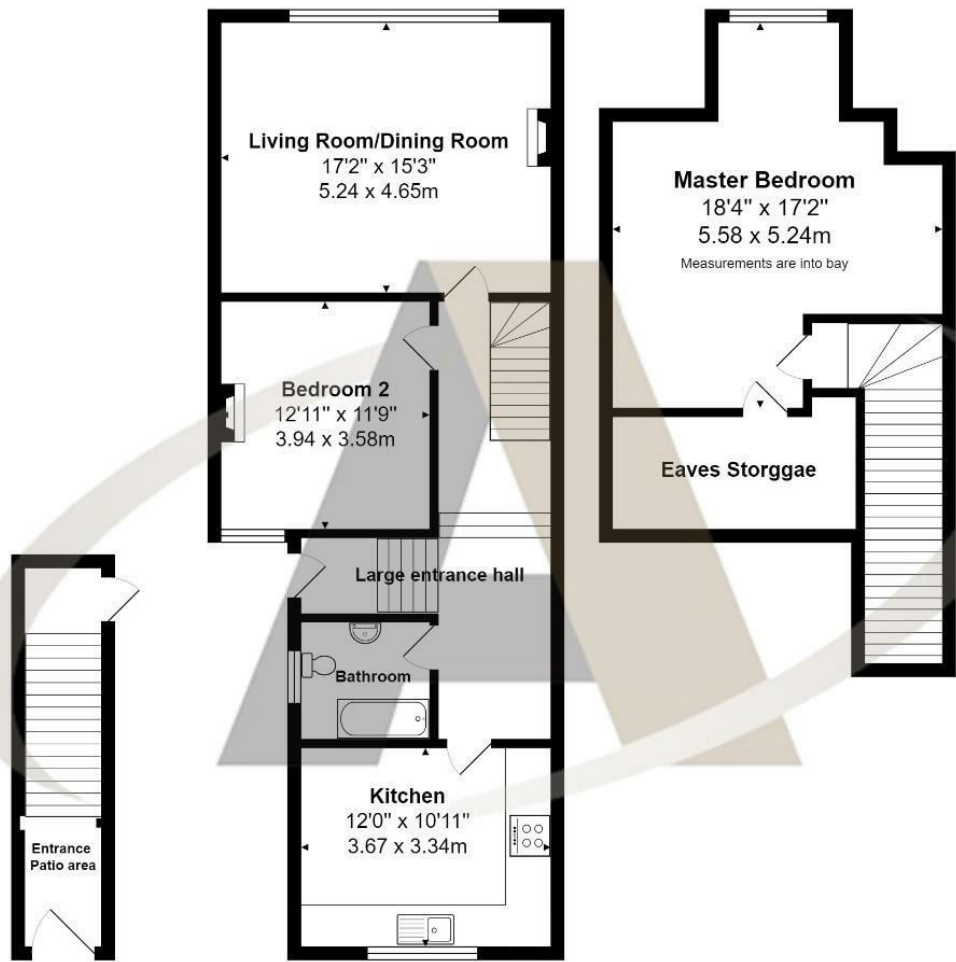
## 23a Woodthorpe Road, Ashford, TW15 2RP

Situated in the centre of Ashford, a stone's throw from the mainline station and the amenities of High Street, this particularly large two double bedroom split-level maisonette offers fantastic accommodation over two floors. With a share of the freehold, a long lease, and one allocated parking space, this property is a rare find. The spacious entrance hallway sets a welcoming tone, showcasing the open and airy feel that continues throughout. High ceilings enhance the charm of the property, creating a sense of grandeur. The modern kitchen is well-equipped with a range of fitted units and worktops, providing ample space for a breakfast table. The recently remodeled bathroom features a stylish white suite with a black trim finish, adding a touch of contemporary elegance.

The accommodation includes a generously sized double bedroom with plenty of room for furnishings. At the end of the hallway, the main reception room impresses with its approximate dimensions of 18x17 feet, a feature fireplace, and handmade storage space built into either side of the chimney breast. The top floor is dedicated to the expansive master bedroom, which includes a recess for a free-standing wardrobe and a cupboard accessing the eaves storage. This property combines modern comforts with period charm, offering a delightful living experience in a prime Ashford location.



# Floor Plan



## Features

- Prime location in the heart of Ashford, just moments from the mainline station and High Street
- Includes a share of the freehold, a long lease, and one allocated parking space
- High ceilings add charm and a sense of grandeur to the property
- Recently remodeled bathroom featuring a stylish white suite with black trim finish
- Large two double bedroom split-level maisonette with accommodation over two floors
- Spacious entrance hallway with an open and airy feel throughout
- Modern kitchen with fitted units, worktops, and space for a breakfast table
- Generously sized main reception room (approx. 18x17 feet)

