



13 Everest Road, Staines-Upon-Thames, TW19 7EB

£469,950

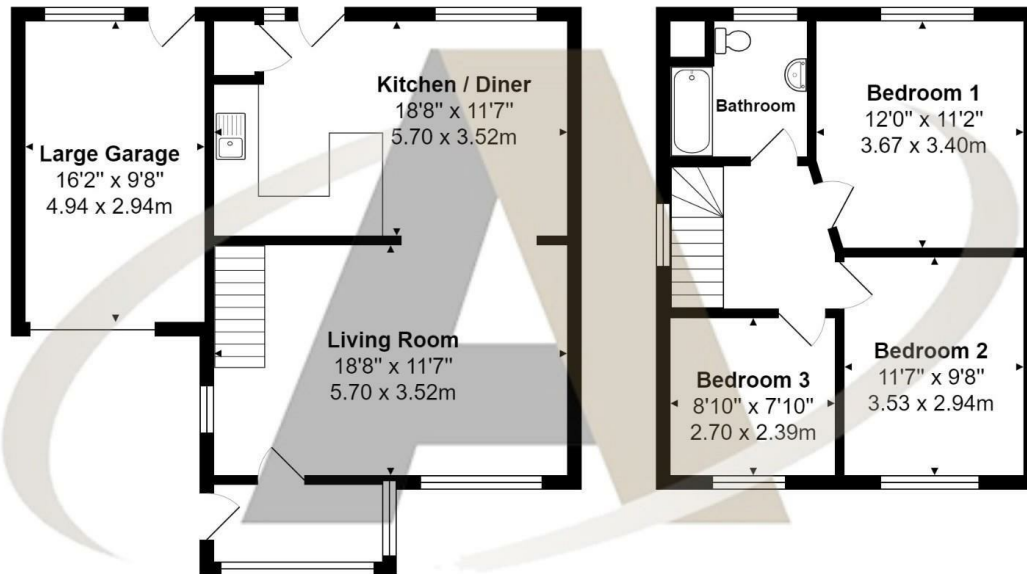
## 13 Everest Road, Staines-Upon-Thames, TW19 7EB

Nestled in one of the area's most sought-after roads, this larger-than-average three-bedroom semi-detached family home offers an ideal blend of space, convenience, and potential. With its prime location, you will find local schools, shops, bus routes, and recreation parks all within easy reach, making daily errands and family outings a breeze. The property boasts a substantial own driveway leading to a generously sized garage, providing ample parking and storage solutions. The good-sized rear garden, enhanced by the additional width afforded by the driveway, creates a delightful outdoor space perfect for entertaining or simply enjoying some peace and quiet.

This home presents a fantastic opportunity for those looking to add value through extensions, whether to the side, rear, or into the expansive loft space. Such modifications could significantly enhance the living area and increase the property's value. Priced very sensibly to encourage a quick sale, this home is an excellent investment for growing families or savvy buyers. With the added advantage of being sold with no onward chain, the purchasing process is streamlined, making it easier to envision your future in this wonderful property. Call your local property expert's, Aspen on 01784 252202.



# Floor Plan



## Features

- Situated on one of the area's most sought-after roads
- Close proximity to local schools, shops, bus routes and recreation parks
- Good-sized rear garden with additional width
- Priced attractively to encourage a quick sale
- Larger-than-average three-bedroom semi-detached home
- Features a substantial own driveway leading to a generously sized garage
- Opportunities to add value through side, rear, or loft extensions
- Streamlined purchasing process with no onward chain

Aspen Residential Services  
 77 Church Road, Ashford, Surrey, TW15 2PE  
 Tel: 01784 252 202  
 Email: enquiries@aspensalesandlettings.com



