



38 Pates Manor Drive, Bedfont, TW14 8JJ

£510,000

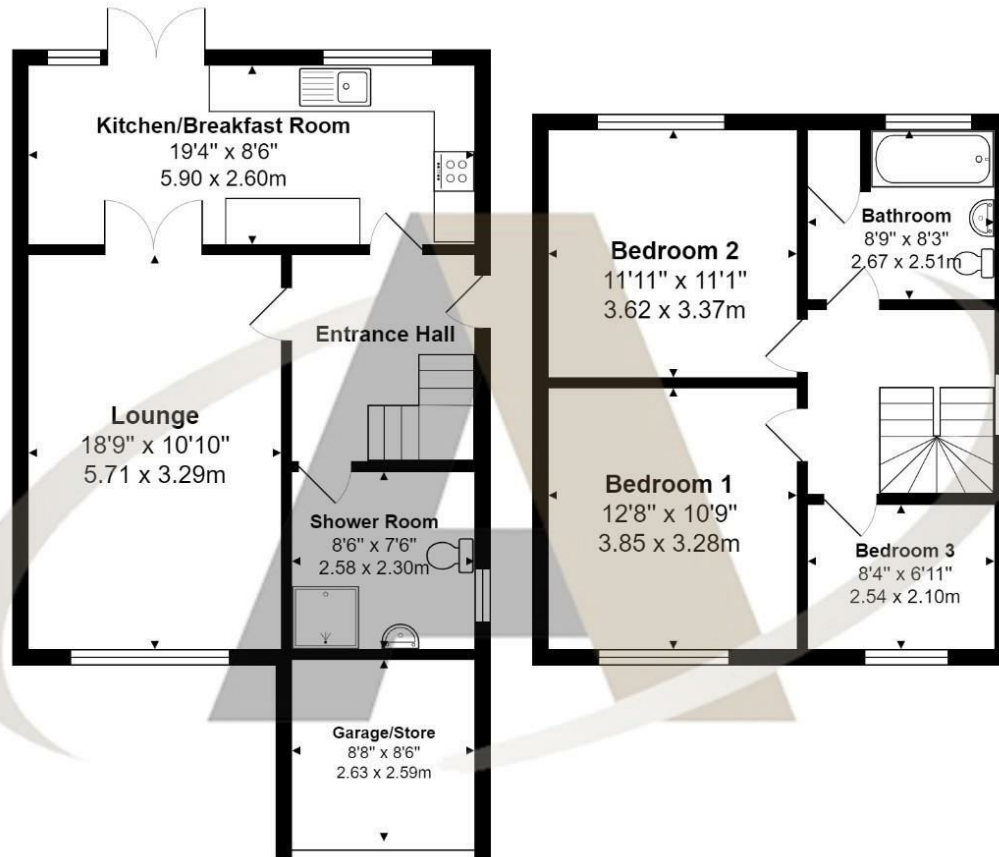
38 Pates Manor Drive, Bedfont, TW14 8JJ

NO ONWARD CHAIN! Nestled at the end of a tranquil cul-de-sac in a highly sought-after neighborhood, this larger-than-average semi-detached family home offers an exceptional living experience. Boasting three spacious bedrooms and two modern bathrooms, the property ensures ample space for comfort and convenience. The home features a generously sized lounge, perfect for family gatherings and relaxation, while the open plan kitchen/breakfast room is ideal for both casual meals and entertaining guests. The kitchen's layout promotes a seamless flow of conversation and activities, enhancing the home's warm and inviting atmosphere.

Outside, the property continues to impress with a substantial private driveway, providing plenty of off-street parking. The low maintenance garden is an oasis of tranquility, complete with a good-sized shed, perfect for storage or as a workshop. This charming home is conveniently located within easy reach of local schools and shops, making it an ideal choice for families seeking both comfort and convenience. With its prime location and well-appointed features, this property is a rare find that promises a wonderful lifestyle in a desirable community. Call the vendors top choice, local expert, Aspen estate agents on 01784 252202.



Floor Plan



Features

- Three bedrooms
- Kitchen/breakfast room
- Good size bedrooms
- Sought after road
- Two Bathrooms
- Good size lounge
- Cul-de-sac
- Close to schools

