



412a London Road, Ashford, TW15 3AB

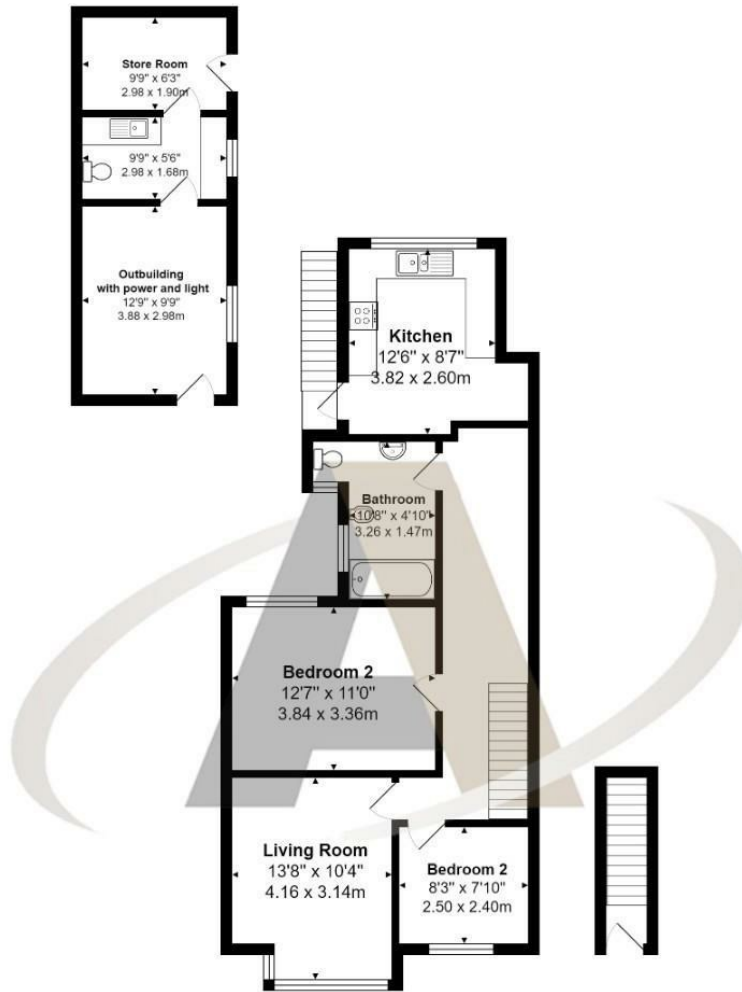
£315,000

## 412a London Road, Ashford, TW15 3AB

This exceptionally spacious two-bedroom maisonette is perfectly located within walking distance of the station, local shops, and recreation parks. It features a private entrance leading to a generous landing, a sizable separate kitchen, and a large bathroom. The property also boasts a rear garden with a versatile brick-built outbuilding, thoughtfully divided into three rooms with its own power supply, offering endless possibilities for use. This delightful home combines convenience and ample living space, making it an ideal choice for those seeking both comfort and accessibility. This very sensible price will attract an early sale, please call the vendors top choice of sole agents Aspen on 01784 252202.



# Floor Plan



## Features

- Exceptionally spacious two-bedroom maisonette
- Prime location within walking distance of the station
- Close to local shops and recreation
- Private entrance leading to a generous landing
- Sizable separate kitchen
- Large bathroom
- Rear garden featuring a versatile brick-built outbuilding
- Outbuilding divided into three rooms

