



21 Townsend Road, Ashford, TW15 3PR

£500,000

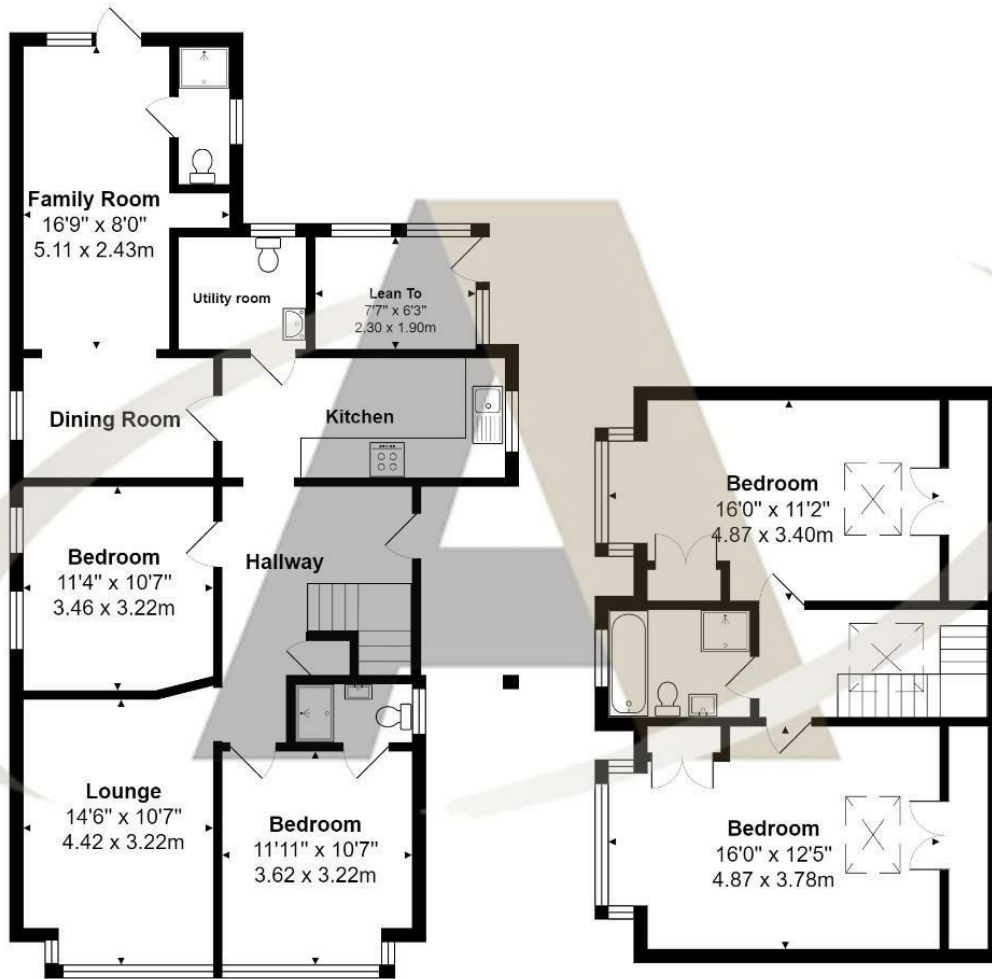
21 Townsend Road, Ashford, TW15 3PR

NO ONWARD CHAIN, PRICED TO SELL!! A fantastic opportunity to purchase this generously sized, four double bedroom extended detached family home, ideally situated just 1/2 mile from the town centre and Ashford train station. This property has undergone significant improvements in recent years, including a large loft conversion that created two additional double bedrooms and a four-piece bathroom suite, along with a new roof on the first floor. Most of the house was re-wired in 2020, re-plumbed, and fitted with a new gas boiler in 2021. The ground floor features two more double bedrooms, one with a newly added ensuite shower room, a new staircase in the hallway, newly laid wood laminate flooring, a re-decorated living room, a large original reception room to the rear with a small ensuite shower, a separate utility room, and a kitchen with a lean-to overlooking the garden.

Externally, the house has been rendered and includes a small driveway and a private garden. Planning permission has been granted to add a large kitchen diner extension in the future, further enhancing the already impressive accommodation. Plans for the kitchen extension are available upon request. This property offers a perfect blend of modern improvements and potential for further customization, making it an ideal family home in a prime location. Call the vendors chosen sole agents, Aspen on 01784 252202.



Floor Plan



Features

- Four bedrooms
- Three bathrooms
- Driveway
- Close to schools
- Three reception rooms
- Good size garden
- Close to station
- Close to town center

