



16 Little Park Drive, Feltham, TW13 5HZ

£650,000

16 Little Park Drive, Feltham, TW13 5HZ

Welcome to this charming semi-detached house located on Little Park Drive in the desirable area of Feltham. This property boasts a spacious 28' lounge/dining room, perfect for entertaining guests or relaxing with your family. With one reception room, five bedrooms, and two bathrooms, there is plenty of space for everyone in the household.

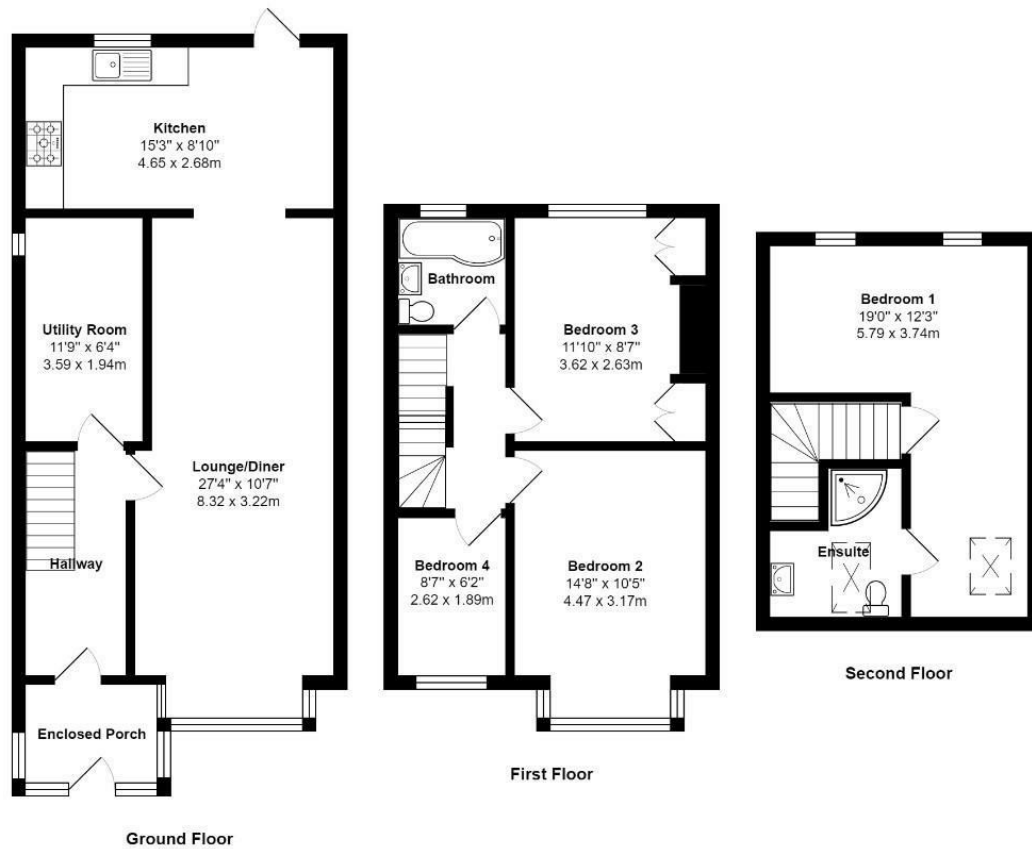
One of the standout features of this property is the kitchen extension, providing a modern and functional space for cooking and dining. Additionally, the loft conversion adds a touch of luxury by offering an extra bedroom with an en-suite bathroom, perfect for guests or as a private retreat.

Conveniently situated close to shops and the station, this home offers easy access to amenities and transportation links, making daily errands and commuting a breeze. Furthermore, the fact that this property comes with no onward chain means a smoother and quicker transition for potential buyers.

Don't miss out on the opportunity to own this lovely home in Feltham. Book a viewing today and envision the possibilities that this property holds for you and your family.



Floor Plan



Little Park Drive, Feltham, TW13 5HZ

Total Area: 1356 ft² ... 126.0 m²

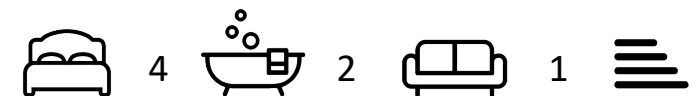
All measurements are approximate and for display purposes only



Features

- GREAT ACCESS TO FELTHAM STATION
- LARGE LOUNGE/DINING ROOM
- TWO BATHROOMS
- FOUR/FIVE BEDROOM SEMI-DETACHED HOME
- SPACIOUS KITCHEN EXTENSION
- NO ONWARD CHAIN

Aspen Residential Services
 77 Church Road, Ashford, Surrey, TW15 2PE
 Tel: 01784 252 202
 Email: enquiries@aspensalesandlettings.com





A
ASPEN
SALES & LETTINGS