



18 Fir Tree Place Church Road, Ashford, TW15 2PH

£300,000

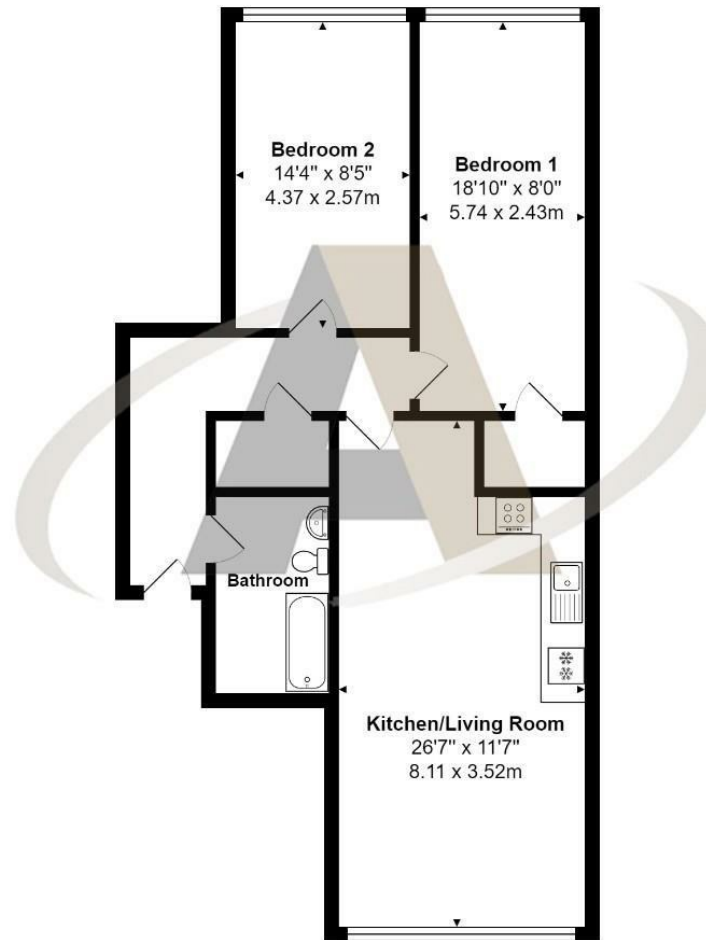
## 18 Fir Tree Place Church Road, Ashford, TW15 2PH

ASPEN NEW HOMES offers for sale, this exceptional first-floor apartment, recently converted from offices, offers a spacious and contemporary living experience in the heart of Ashford. Boasting two generously sized double bedrooms, this larger-than-average new build benefits from a prime central location, just steps away from local shops and the mainline train station. The apartment features a large, open-plan living and dining room, perfect for entertaining and relaxation, alongside a modern, fitted kitchen. With its own private front door and allocated parking, convenience and privacy are assured.

Finished to an impeccable standard by renowned London developers, Albion Homes London Ltd, this property showcases superior craftsmanship and attention to detail. The apartment comes with an impressive lease term of over 180 years, providing long-term security and peace of mind. Additionally, the sensible service charge of just £630 per annum makes this an attractive and affordable option for discerning buyers. This is a unique opportunity to own a high-quality, centrally located home in one of Ashford's most sought-after developments. Please call the developers top choice of New Homes estate agent, Aspen New Homes on 01784 252202



# Floor Plan



## Features

- Large, open-plan living and dining room, ideal for entertaining and relaxation
- Modern, fully fitted kitchen
- Finished to a high standard by renowned London developers Albion Homes London Ltd
- Exceptional first-floor apartment recently converted from offices
- Two generously sized double bedrooms
- Allocated parking space included
- Impressive lease term of over 180 years and a sensible service charge of £630 per annum
- Spacious and contemporary living experience in central Ashford

