



32 Lynegrove Avenue, Ashford, TW15 1ER

£650,000

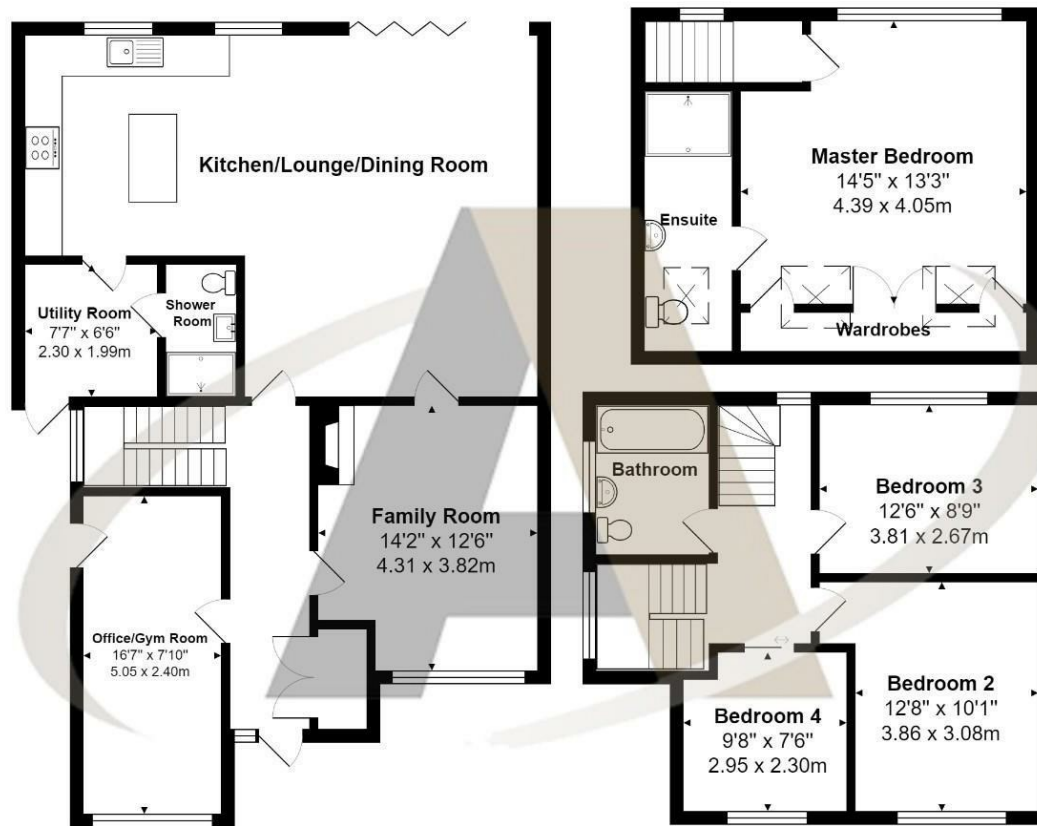
## 32 Lynegrove Avenue, Ashford, TW15 1ER

Nestled in a sought-after neighborhood, this immaculately presented four-bedroom, three-bathroom semi-detached family home offers an exceptional blend of modern luxury and practical living. Extensively extended and renovated to the highest standards, this home boasts three spacious reception rooms, perfect for entertaining and family gatherings. The property is ideally located within easy reach of Ashford's top-rated schools, shops, and serene recreation parks, providing a convenient and comfortable lifestyle for its residents.

The exterior of the property is equally impressive, featuring a beautifully landscaped rear garden, perfect for outdoor relaxation and activities. The home's own driveway provides parking for two cars, ensuring convenience and ease for the busy family. Given its high-quality finishes, prime location, and sensible pricing, this property is expected to sell quickly. Don't miss the opportunity to make this exceptional home yours. Call the vendors number one choice of Ashford estate agents Aspen, on 01784 252202.



# Floor Plan



## Features

- Immaculately presented four-bedroom, three-bathroom semi-detached family home
- Extensively extended and renovated to the highest standards
- Three spacious reception rooms, ideal for entertaining and family gatherings
- Prime location in a sought-after neighborhood
- Close proximity to Ashford's top-rated schools
- Easy access to vibrant shopping areas and serene recreation parks
- Beautifully landscaped rear garden for outdoor relaxation and activities
- Own driveway with parking for two cars

