



47 Harrow Road, Bedfont, TW14 8RT

£585,000

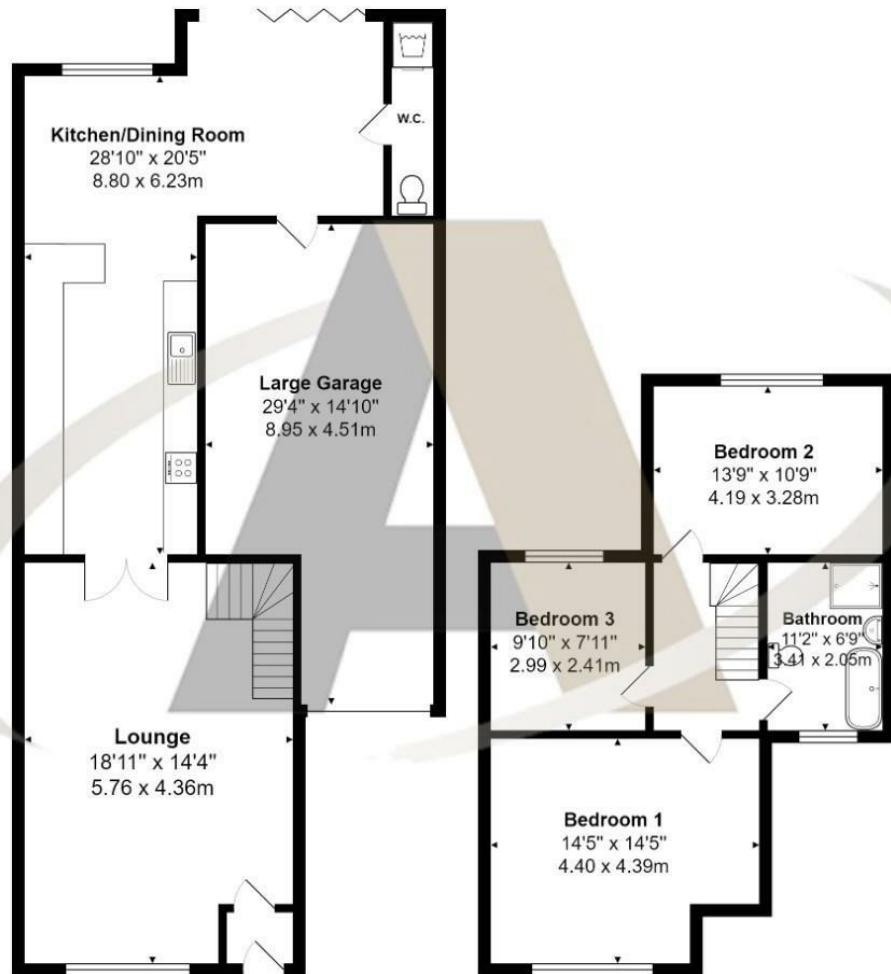
## 47 Harrow Road, Bedfont, TW14 8RT

This sensibly priced and deceptively spacious three-bedroom extended family home on Harrow Road borders Ashford, Bedfont, and Feltham, offering a prime location for convenient living. Situated close to a main Tesco, with excellent links to the M25 and Hatton Cross tube station nearby, this property ensures ease of access to essential amenities and transport. The home features a recently fitted, high-quality extended kitchen, a large garage, and a downstairs W.C., providing ample space and functionality for modern family life. With three generously sized bedrooms and a large four-piece family bathroom, comfort and convenience are guaranteed.

Adding to its appeal, the property includes its own drive and a beautifully presented large rear garden, perfect for outdoor activities and relaxation. Modern sustainability is a standout feature, with 16 solar panels enhancing energy efficiency and cost savings. This home is an excellent opportunity for families seeking space, convenience, and modern amenities. To arrange a viewing, please call the vendors' chosen agent, Aspen, at 01784 252202.



# Floor Plan



## Features

- Recently fitted, high-quality extended kitchen providing modern functionality.
- Large garage and downstairs W.C.
- Three generously sized bedrooms
- Modern sustainability with 16 solar panels
- Close to main Tesco
- Cul-De-Sac
- Beautiful garden
- Own drive

