



Flat 10 Insignia Court, Church Road, Ashford, TW15 2AX

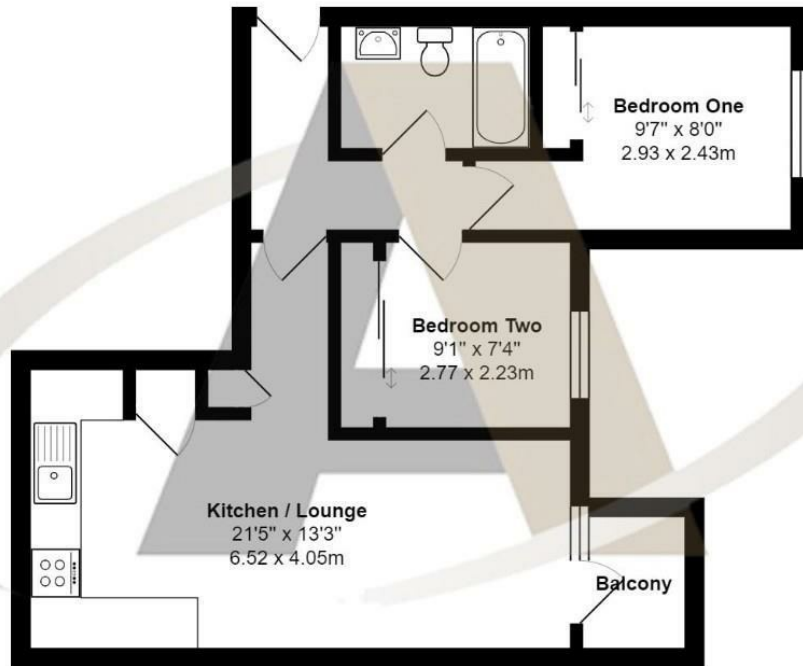
£299,950

Flat 10 Insignia Court, Church Road, Ashford, TW15 2AX

This third-floor apartment is offered in excellent condition having been redecorated throughout, the apartment has two bedrooms both with fitted wardrobes, a fully fitted open-plan kitchen, a lounge with direct access to the balcony, a modern bathroom, and a lift to all floors. The apartment has allocated parking and is within walking distance of shops, schools and Ashford Train Station. The property is offered to the market with no onward chain, please call Aspen Estate Agents for further details and to arrange a viewing.



Floor Plan



Insignia Court, Ashford

Total Area: 503 ft² ... 46.7 m²

All measurements are approximate and for display purposes only



Features

- Two Bedrooms with built in storage
- Open plan kitchen
- Walking distance to Schools, Shops and Train Station
- No Onward Chain
- Balcony
- Lift to all floors
- Allocated parking

