



231C Feltham Hill Road, Ashford, TW15 1LX

£325,000

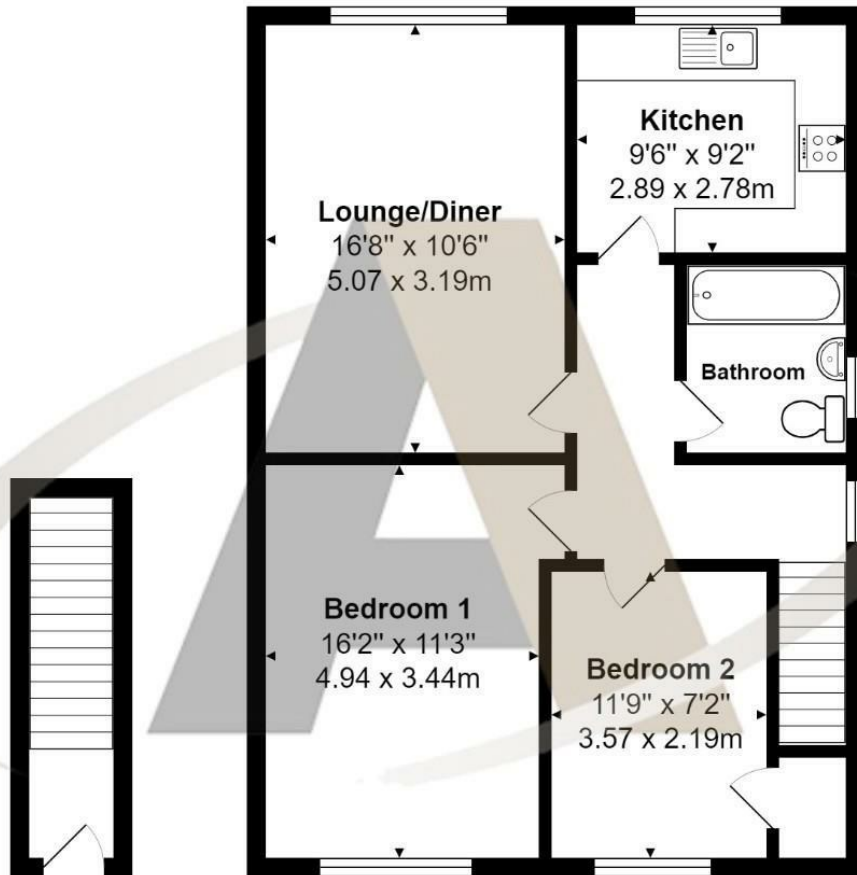
## 231C Feltham Hill Road, Ashford, TW15 1LX

Nestled within easy reach of local shops, bus routes, and parks, this immaculately presented first-floor maisonette offers an ideal blend of comfort and convenience. Featuring two spacious double bedrooms, this home is perfect for those seeking a peaceful yet well-connected lifestyle. The property boasts a modern separate kitchen, a contemporary bathroom, and a generously sized lounge/dining room, providing ample space for relaxation and entertaining.

Additional highlights include a garage, a charming front garden, and an outside drying area, adding to the overall appeal of this delightful residence. With its attractive features and prime location, this maisonette is a must-see. To arrange a viewing, please contact Aspen, the vendors' chosen sole agents, at 01784 252202.



# Floor Plan



Features

