



7A Hughes Road, Ashford, TW15 1RF

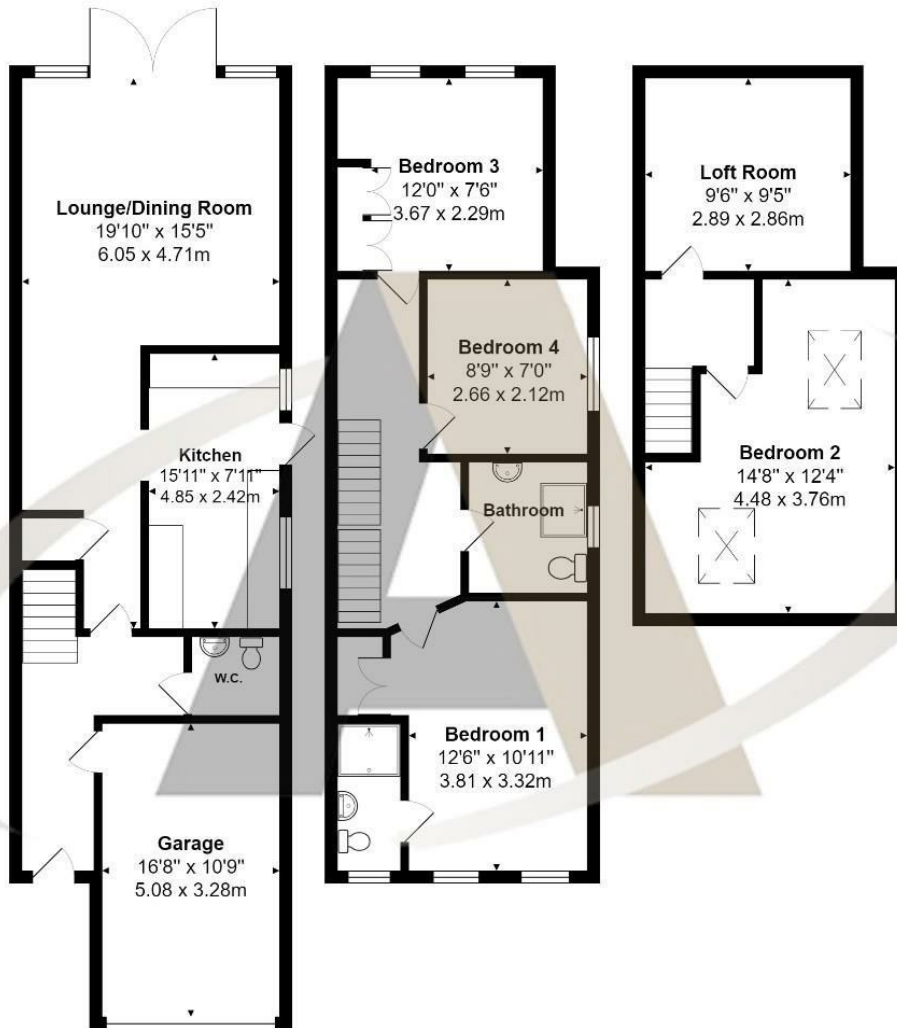
£565,000

## 7A Hughes Road, Ashford, TW15 1RF

Embrace modern family living with this modern build semi-detached residence in Ashford. Beyond its enviable location lies a wealth of features designed to enhance your lifestyle, including the potential to expand living space by converting the integral garage. Whether you're enjoying the convenience of a downstairs W.C., basking in the ample natural light streaming through the windows, or relishing the outdoor space in the good-sized garden, this home offers a seamless blend of functionality and comfort. With four bedrooms, two bathrooms, and parking for multiple cars on your own driveway, every aspect of family life is catered to. Seize the opportunity to make this your forever home – contact the vendors' trusted sole agents on 01784 252202 and embark on your journey to domestic bliss today!



# Floor Plan



## Features

- Four Bedrooms
- Integral Garage
- Loft Room
- Close to Shops
- Two Bathrooms
- Downstairs W.C.
- Close to Schools
- Great Location

