



11a Fairholme Road, Ashford, TW15 2LL

£725,000

11a Fairholme Road, Ashford, TW15 2LL

Beautifully presented detached spacious family home in central Ashford being sold with the benefit of no onward chain. Boasting four generously sized bedrooms and master with a double shower ensuite. Separate family bathroom with cast iron bath/shower and screen, toilet, bidet, and basin. The versatile ground floor offers ample space for comfortable living with stunning newly fitted 19ft modern kitchen diner with stone quartz worktop, incorporating Bosh dishwasher and double oven, Hotpoint Fridge Freezer and Zanussi four ring hob. There are two further reception rooms, one with beautiful parquet flooring and open fireplace and the other, a dining/family room. The ground floor also has a separate cloakroom. The property also boasts a large loft, mostly boarded, and loft ladder.

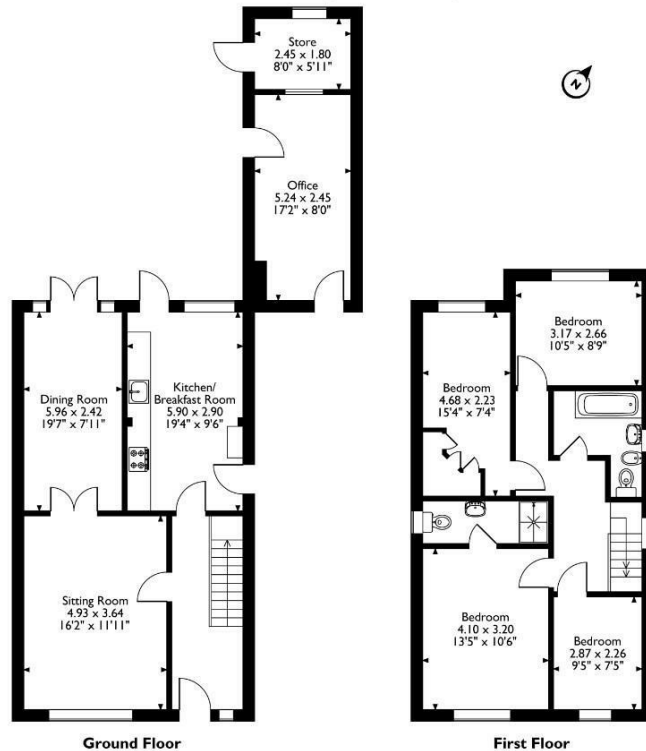
Outside, the property features a low maintenance front garden and large west facing back garden. Parking is a breeze with off-road space for multiple vehicles. Additionally, a 17ft newly refurbished office and garden storeroom offer flexible spaces for your work/gym and storage needs.

Positioned just a short stroll away from the mainline train station, perfect for commuting to Waterloo, exploring the town centre, or accessing the finest local schools is effortlessly convenient. Call the vendors chosen sole agents on 01784 252202.



Floor Plan

11A Fairholme Road, Ashford, Surrey
 Approximate Gross Internal Area
 Main House = 115 Sq M/1238 Sq Ft
 Outbuildings = 17 Sq M/183 Sq Ft
 Total = 132 Sq M/1421 Sq Ft



Please note that the location of doors, windows and other items are approximate and this floorplan is to be used for illustrative purposes only. Unauthorized reproduction is prohibited.



Features

- Four Good Size Bedrooms
- Large 17ft Office/Gym Room
- Good Size Garden
- Town Centre Location
- Two Reception Rooms
- Large Own Drive
- Two Bathrooms
- Close To Station

Aspen Residential Services
 77 Church Road, Ashford, Surrey, TW15 2PE
 Tel: 01784 252 202
 Email: enquiries@aspensalesandlettings.com

