



3 Ashcombe Court London Road, Ashford, TW15 3AF

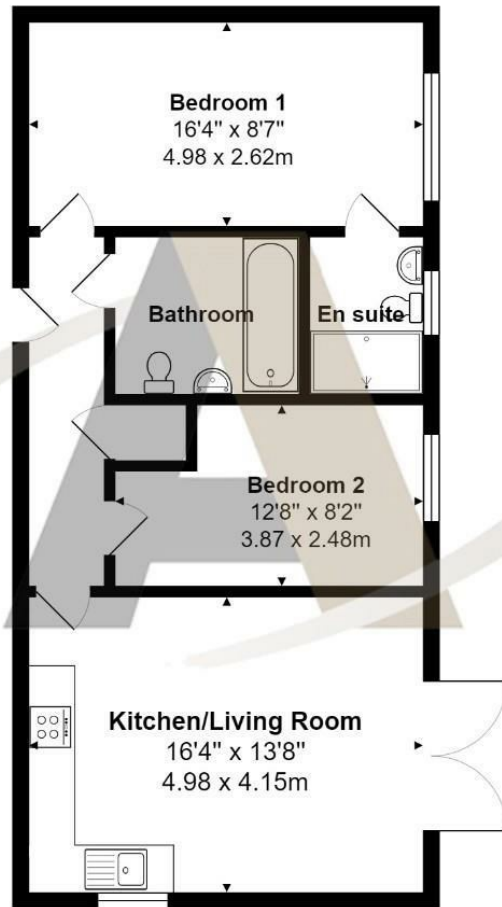
£265,000

3 Ashcombe Court London Road, Ashford, TW15 3AF

Step into luxury living with this impeccably maintained ground floor apartment boasting two bedrooms and two bathrooms. Nestled in a desirable location, this property offers more than just a home—it provides a lifestyle. Enjoy the convenience of an allocated undercover parking space, ensuring your vehicle stays protected year-round. Direct access to the garden offers a serene retreat, perfect for morning coffees or evening relaxation. The spacious lounge invites natural light through patio doors, leading to a private patio area and the communal rear garden. With a lease of 112 years, this residence ensures enduring comfort and value. Welcome to your haven of modern elegance. Call the vendors top choice sole agent on 01784 252202.



Floor Plan



Features

- Two Bedrooms
- 112 Year Lease
- Undercover Parking
- Two Bathrooms
- Access To Garden
- Communal Garden

