



3 Ashcombe Court London Road, Ashford, TW15 3AF

£285,000

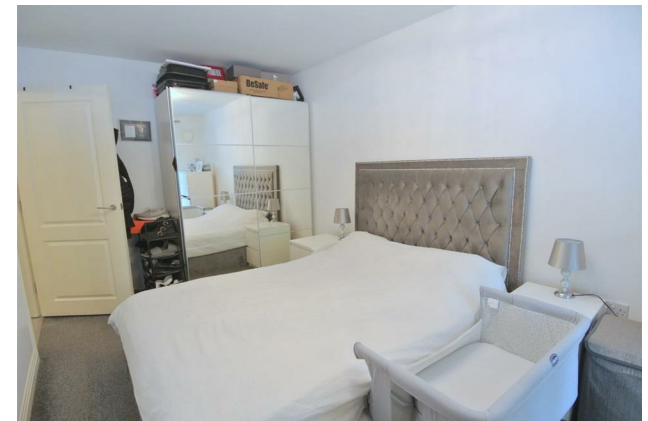
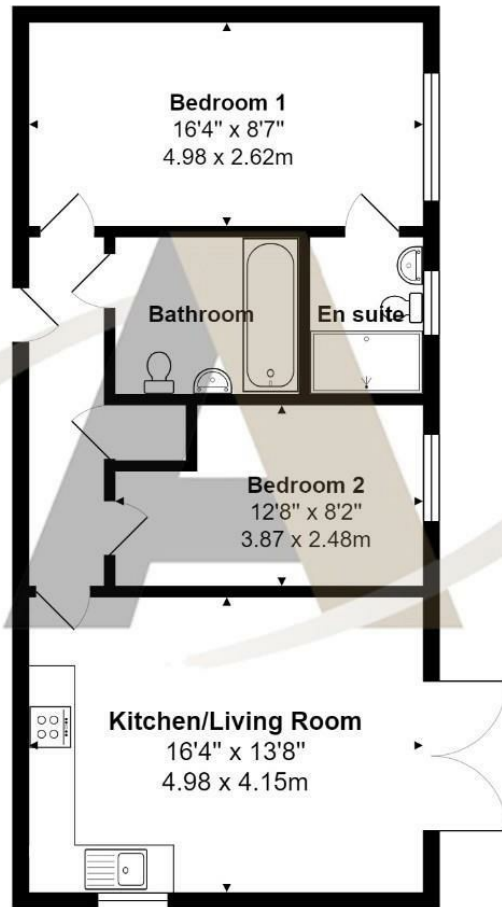
## 3 Ashcombe Court London Road, Ashford, TW15 3AF

Step into luxury living with this impeccably maintained ground floor apartment boasting two bedrooms and two bathrooms. Nestled in a desirable location, this property offers more than just a home—it provides a lifestyle. Enjoy the convenience of an allocated undercover parking space, ensuring your vehicle stays protected year-round. Direct access to the garden offers a serene retreat, perfect for morning coffees or evening relaxation. The spacious lounge invites natural light through patio doors, leading to a private patio area and the communal rear garden. With a lease of 112 years, this residence ensures enduring comfort and value. Welcome to your haven of modern elegance. Call the vendors top choice sole agent on 01784 252202.





# Floor Plan



## Features

- Two Bedrooms
- 112 Year Lease
- Undercover Parking
- Two Bathrooms
- Access To Garden
- Communal Garden

