



4 Hughes Road, Ashford, TW15 1RF

£750,000

4 Hughes Road, Ashford, TW15 1RF

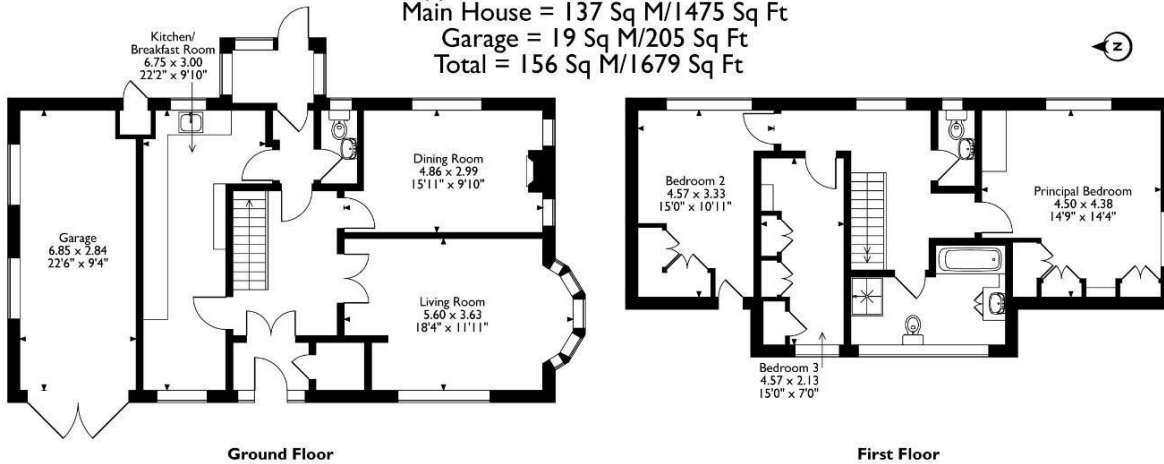
Welcome to this charming detached character home located on a highly desirable road in Ashford, just a short walk from the town's premier schools, shops, and recreational amenities. This individually stock brick built residence offers two inviting reception rooms, including a spacious living room perfect for family gatherings and a dining room that could easily be transformed into a fourth bedroom to suit your needs. The 22ft kitchen provides ample space for culinary endeavors and features a layout ideal for modern living.

Outside, the property boasts a substantial driveway with parking for four to five cars, ensuring convenience for residents and visitors alike. The sizable 22ft garage offers potential for conversion into additional living space, subject to planning permission. With its excellent location and versatile living spaces, this home presents a rare opportunity to enjoy comfortable family living in the heart of Ashford. Don't miss out on the chance to explore this wonderful property - schedule your viewing today by calling the vendors chosen sole agents on 01784 252202!



Floor Plan

4 Hughes Road, Ashford, Surrey
 Approximate Gross Internal Area
 Main House = 137 Sq M/1475 Sq Ft
 Garage = 19 Sq M/205 Sq Ft
 Total = 156 Sq M/1679 Sq Ft



Please note that the location of doors, windows and other items are approximate and this floorplan is to be used for illustrative purposes only. Unauthorized reproduction is prohibited.



Features

- Three/Four Bedrooms
- 22ft Kitchen
- Close To School
- Popular Location
- Own Drive With Parking For Four/Five Cars
- 22ft Garage (could be converted subject to planning)
- Close To Shops
- Individual Build

