



A
ASPEN
SALES & LETTINGS

FOR SALE
01784 252202
FREE VALUATION!
HOW MUCH IS YOUR HOUSE WORTH?

A
ASPEN
SALES & LETTINGS
aspenstateagents.co.uk

8 Elmcroft Drive, Ashford, TW15 2PQ

£325,000

8 Elmcroft Drive, Ashford, TW15 2PQ

Situated within a gated development in the heart of Ashford town centre and therefore representing an ideal purchase for commuters, first time buyers or investors is this two double bedroom first floor maisonette.

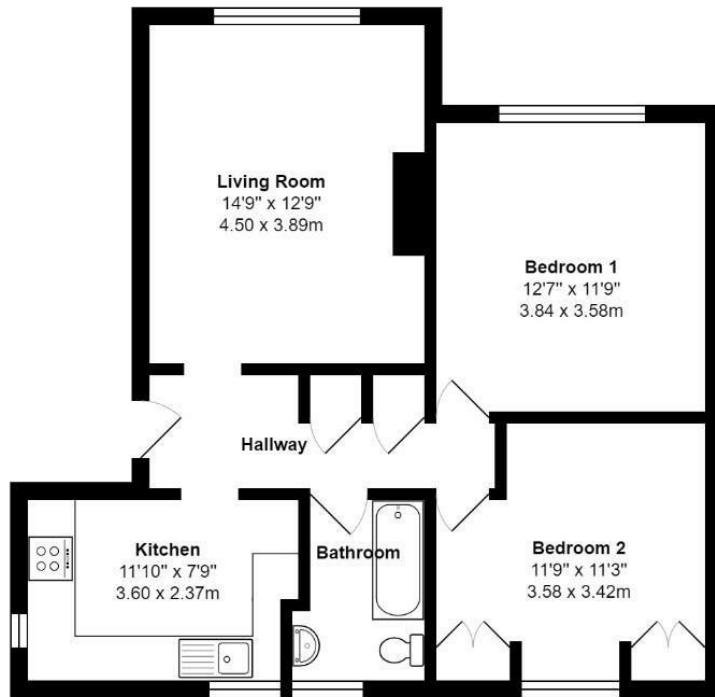
This home offers a very good sized living room, a separate dual aspect kitchen, the two double bedrooms and bathroom.

There is a private loft, perfect for additional storage, a generous sized rear garden, allocated parking and a very long lease.

Viewings are highly recommended with the sellers sole agents.



Floor Plan



First Floor

Elmcroft Drive, Ashford, TW15 2PQ

Total Area: 684 ft² ... 63.6 m²

All measurements are approximate and for display purposes only



Features

- Town Centre Location
- First Floor Maisonette
- Spacious Living Room
- Large Rear Garden
- Gated Development
- Two Double Bedrooms
- Separate Dual Aspect Kitchen
- Allocated Parking

