



32 Hughes Road, Ashford, TW15 1RF

£750,000



## 32 Hughes Road, Ashford, TW15 1RF

Introducing a truly exceptional residence nestled within the coveted Hughes Road, Ashford, this stunning 3-bedroom detached bungalow epitomizes luxury living. From the moment you step inside, it's evident that no expense has been spared in the meticulous extension and renovation undertaken by the current owners.

Boasting three generously sized bedrooms, the master suite is a haven of indulgence, featuring a walk-in wardrobe and an en suite shower room. Bedroom two is equipped with built-in wardrobes, while bedroom three currently serves as an additional reception room, adding to the versatility of the layout. Bedrooms two and three share the stunning, fully tiled family bathroom.

At the heart of this home lies the impressive kitchen/dining/family room, spanning approximately 10 meters by 6 meters. Bathed in natural light streaming through the roof lantern and two sets of bi-folding doors that open onto the garden, this space seamlessly combines functionality with contemporary elegance. The expansive kitchen has handleless gloss cabinets, quartz worktops, a practical island, and a suite of integrated appliances including gas hob, dual ovens, plate warmers, dishwasher, microwave, fridge freezer, and wine cooler. Completing the practical amenities, a spacious utility room offers convenience for laundry and provides additional storage, housing the boiler and offering access to the outdoors.

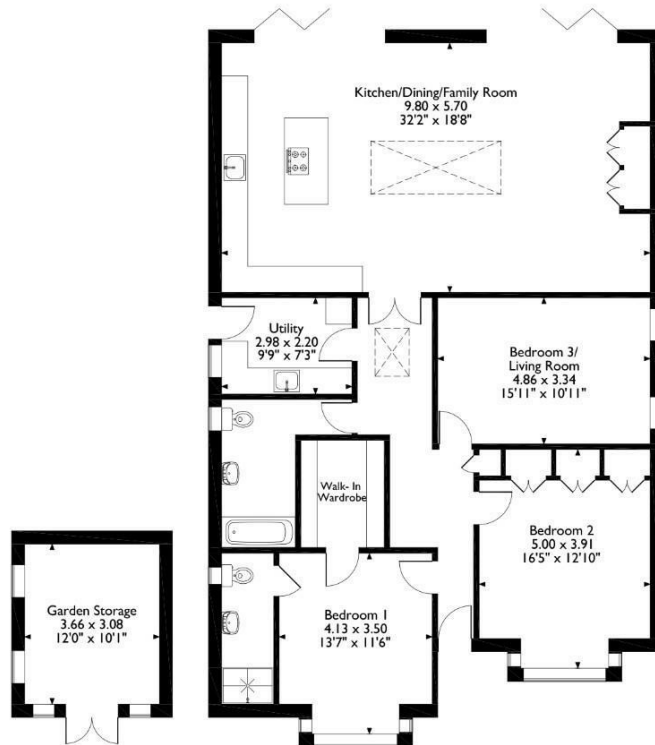
Outside, the property continues to impress with a stunning rear garden boasting a southeast aspect, featuring a sizable patio area and lush lawn, perfect for outdoor entertaining or relaxation. A block-paved driveway at the front provides parking for multiple vehicles.

Beyond its aesthetic appeal, this residence is equipped with modern comforts including underfloor heating in the kitchen, family room, and both bathrooms, gas central heating. Electric blinds, new glazing, and handmade window shutters add to the sophistication of the interior.



# Floor Plan

32 Hughes Road, Ashford, Surrey  
 Approximate Gross Internal Area  
 Main House = 143 Sq M/1539 Sq Ft  
 Outbuilding = 11 Sq M/118 Sq Ft  
 Total = 154 Sq M/1657 Sq Ft



Please note that the location of doors, windows and other items are approximate and this floorplan is to be used for illustrative purposes only. Unauthorized reproduction is prohibited.



## Features

- Exceptional 3-bedroom detached bungalow in Hughes Road, Ashford
- Meticulous extension and renovation showcase no-expense-spared approach by current owners
- Master suite features walk-in wardrobe and en suite shower room
- Impressive kitchen/dining/family room boasts natural light and contemporary elegance
- Kitchen highlights include handleless gloss cabinets, quartz worktops, island, and integrated appliances
- Stunning rear garden with southeast aspect, large patio, and lush lawn
- Beautiful family bathroom
- Off road parking

Aspen Residential Services  
 77 Church Road, Ashford, Surrey, TW15 2PE  
 Tel: 01784 252 202  
 Email: enquiries@aspensalesandlettings.com

