



16 Townsend Road, Ashford, TW15 3PS

£625,000

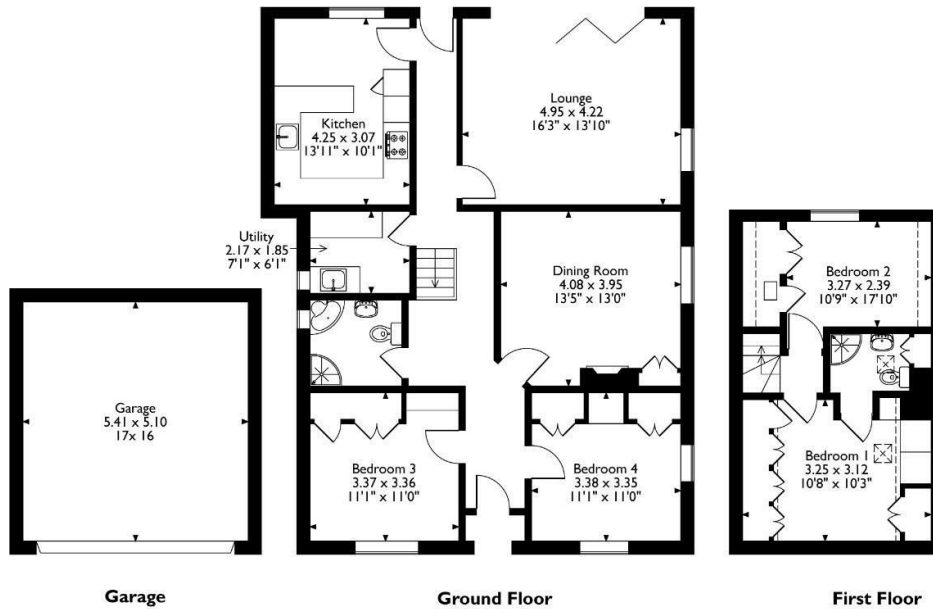
## 16 Townsend Road, Ashford, TW15 3PS

A very well-presented four/five bedroom detached chalet bungalow situated within walking distance of the station, town centre and Ashford's best schools. The property boasts very versatile and spacious living accommodation and incorporates two bathrooms, two reception rooms, a utility room, an upstairs shower room and a downstairs bathroom. Other features include its own drive with the potential to extend further into the garden, a beautifully landscaped rear garden, and a brick-built double garage with light and power. Please contact Aspen Estate Agents the vendors sole selling agents to avoid the disappointment of missing this incredible instruction.



# Floor Plan

16 Townsend Road, Ashford, Surrey  
 Approximate Gross Internal Area  
 Main House = 134 Sq M/1443 Sq Ft  
 Garage = 28 Sq M/301 Sq Ft  
 Total = 162 Sq M/1744 Sq Ft



Please note that the location of doors, windows and other items are approximate and this floorplan is to be used for illustrative purposes only. Unauthorized reproduction is prohibited.



## Features

- Four/Five Bedrooms
- Large Lounge
- Own Drive
- Close To Station
- Two Bathrooms
- Double Garage
- Beautiful Garden
- Close To Town

