



105 Feltham Road, Ashford, TW15 1BS

£450,000

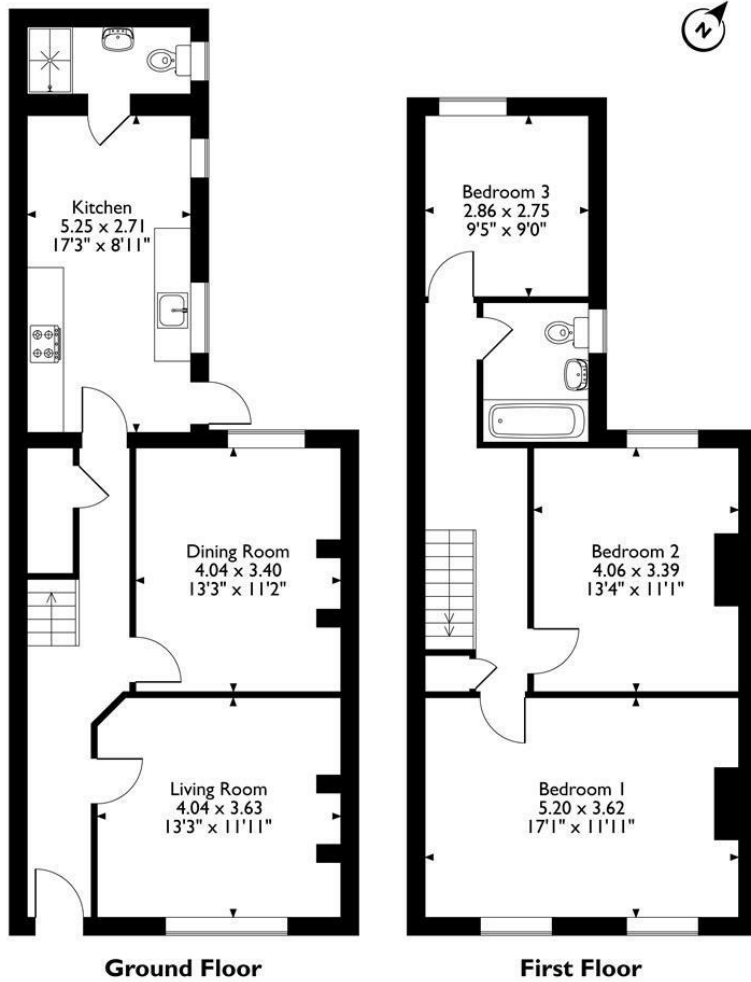
105 Feltham Road, Ashford, TW15 1BS

A very sensibly priced three good size bedroom, two bathroom, two reception room character house situated within walking distance to the town centre, station, Ashford's best schools and recreation parks. The property has been refurbished to the highest of standards with amazing attention to detail, offering tall ceilings, high skirtings, insulated and re plastered walls, landscaped rear garden with access to an allocated parking space and potential to extend into the loft and rear (S.T.P.P). No onward chain!



Floor Plan

105 Feltham Road, Ashford, Surrey



Please note that the location of doors, windows and other items are approximate and this floorplan is to be used for illustrative purposes only. Unauthorized reproduction is prohibited.



Features

- 3 Large Bedrooms
- Two Bathrooms
- Refurbished To High Standard
- Walking Distance To Station
- Two Reception Rooms
- Parking To Rear
- Walking Distance To Town
- Close To Schools

