



6 Tudor Road, Ashford, TW15 1QW

£575,000

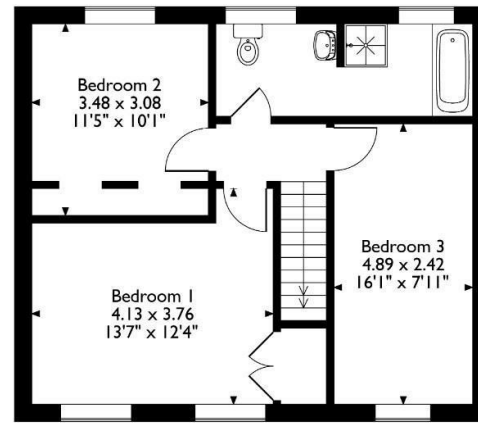
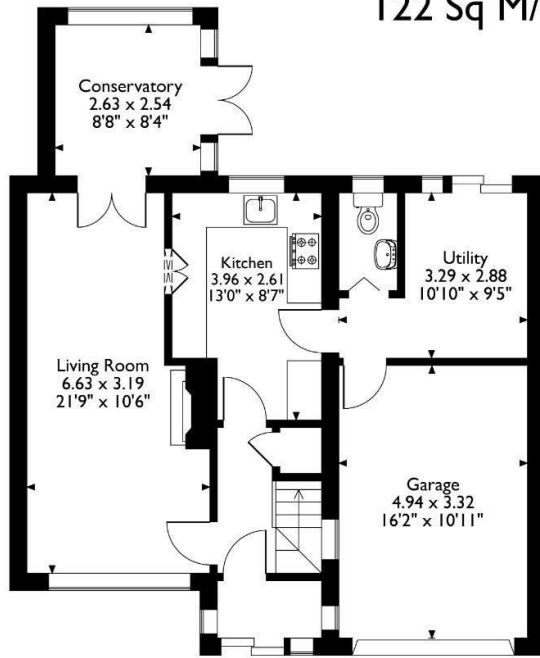
6 Tudor Road, Ashford, TW15 1QW

An immaculately presented three double bedroom semi detached family home situated in a very popular residential road within walking distance of Ashford's best schools, local shops and parks. The property benefits from a larger than average garage, own drive, downstairs W.C., conservatory and a large bathroom that could be split to create an ensuite and family bathroom. Please call the vendors chosen sole agents estate agent to arrange a viewing on 01784 252202.



Floor Plan

6 Tudor Road, Ashford, Surrey
 Approximate Gross Internal Area
 122 Sq M / 1313 Sq Ft



Features

Aspen Residential Services

77 Church Road, Ashford, Surrey, TW15 2PE

Tel: 01784 252 202

Email: enquiries@aspensalesandlettings.com

