



24 Frobisher Crescent, Staines-Upon-Thames, TW19 7DX

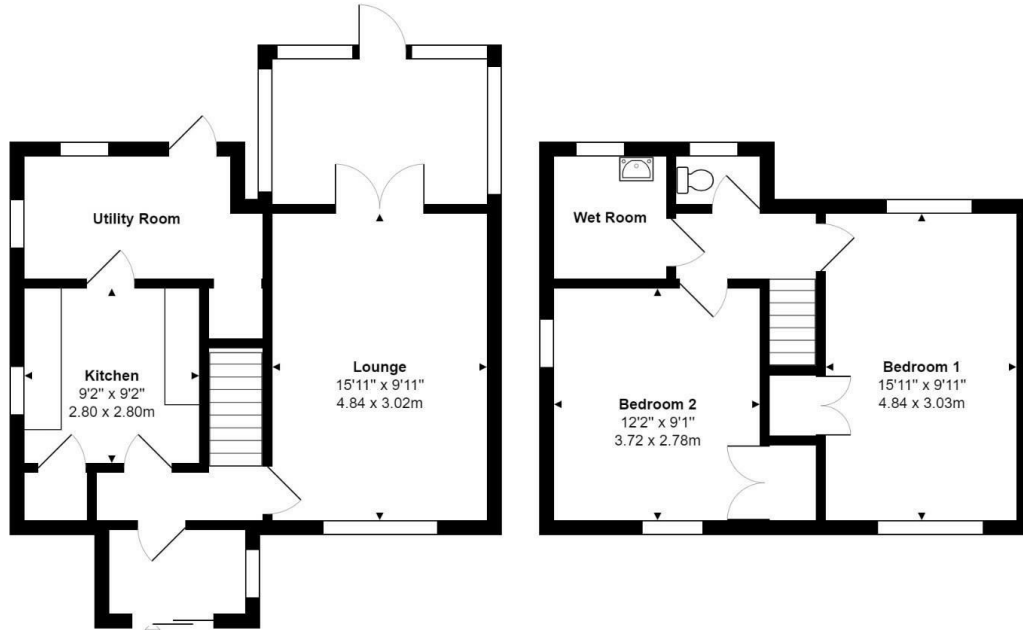
£425,000

24 Frobisher Crescent, Staines-Upon-Thames, TW19 7DX

A two bedroom semi detached house situated in a very popular road within easy reach of local shops, schools and bus routes. The property benefits from large own drive, utility room, two double bedrooms, and potential to extend (S.T.P.P). No onward chain.



Floor Plan



Features

Aspen Residential Services
77 Church Road, Ashford, Surrey, TW15 2PE
Tel: 01784 252 202
Email: enquiries@aspensalesandlettings.com



