



4 The Doultons Octavia Way, Staines-Upon-Thames, TW18 2QX

Situated in a very popular location with good access to Staines town centre is the rarely available two bedroom ground floor apartment that is specifically designed for over 55's independent living.

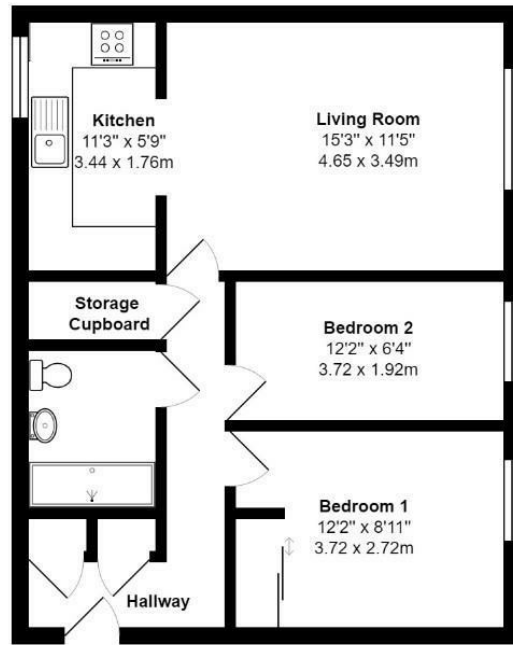
The hallway of the property has three cupboards, one of which is six feet deep, there is then a very spacious lounge/dining room with a separate kitchen to the rear that has built in appliances.

The main bedroom has the benefit of fitted wardrobes, there is a second bedroom and a good sized wet room.

Outside, there are well maintained communal gardens with seating areas and there is also a communal residents lounge and laundry area. There is no onward chain.



Floor Plan



Ground Floor

The Doultons, Octavia Way,
Staines-Upon-Thames, TW18 2QX

Total Area: 597 ft² ... 55.4 m²

All measurements are approximate and for display purposes only



Features

- Rarely Available
- Two Bedrooms
- Separate Kitchen With Built In Appliances
- Residents Lounge And Laundry Area
- Ground Floor Apartment
- Spacious Living Room
- Communal Grounds
- No Onward Chain

Aspen Residential Services
77 Church Road, Ashford, Surrey, TW15 2PE
Tel: 01784 252 202
Email: enquiries@aspensalesandlettings.com



Tenure - Leasehold Council Tax Band -

