



12 The Elms Feltham Hill Road, Ashford, TW15 2DH

£285,000

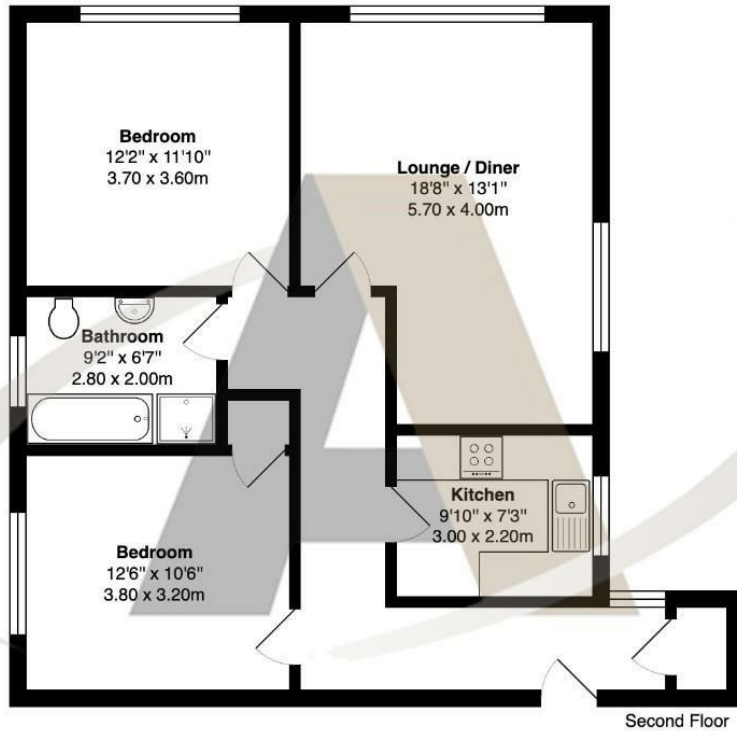


## 12 The Elms Feltham Hill Road, Ashford, TW15 2DH

Aspen Estate Agents are delighted to introduce this lovely two-bedroom apartment to the market. Situated on Feltham Hill Road, Ashford this property is within easy walking distance of Ashford town centre, station, and many of the areas other transport links and popular schools. The Elms is a development of purpose-built apartments and this property is on the second floor. Accommodation comprises two double bedrooms, a large lounge diner, a modern kitchen, and a four-piece bathroom. This property has an allocated parking space and would suit first-time buyers or investors. Prompt viewings are encouraged and can be booked by calling Aspen Estate Agents.



# Floor Plan



## The Elms, Feltham Hill Road, Ashford

Total Area: 786 ft<sup>2</sup> ... 73.0 m<sup>2</sup>  
All measurements are approximate and for display purposes only



### Features

- Two bedroom apartment
- Allocated parking
- Four piece bathroom
- Ideal for first-time buyers or investors
- Large lounge / diner
- Long lease
- Modern Kitchen



