



10 Windermere Close, Feltham, TW14 9QF

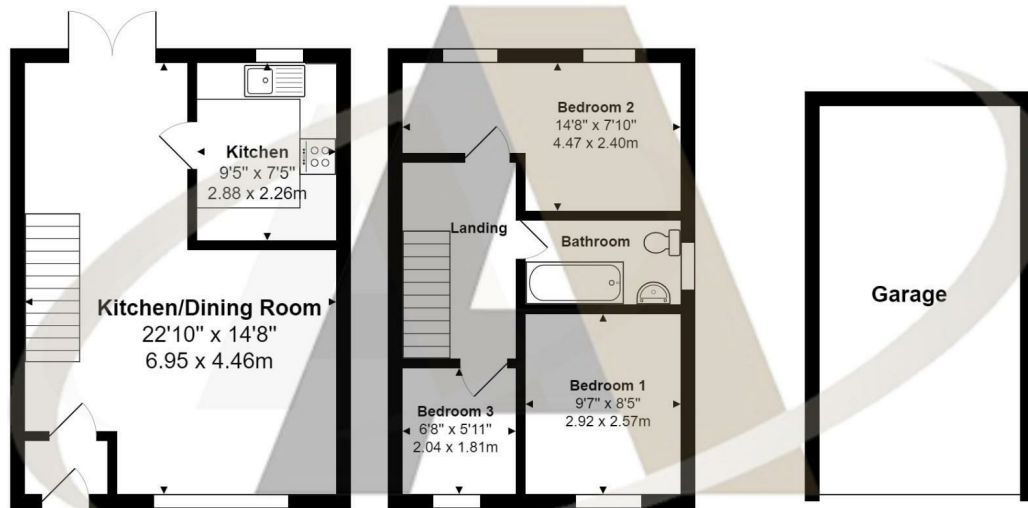
£450,000

10 Windermere Close, Feltham, TW14 9QF

A very well presented modern three bedroom end of terrace house with own drive to garage, plus another parking space in front of the property. The property benefits from a very modern high quality kitchen, good size lounge/diner, potential to extend (S.T.P) and is located within easy reach of shops, schools bus routes and walking distance to Feltham mainline train station which is located within zone 6. Very sensibly priced for an early sale. No Onward Chain!



Floor Plan



Features

- Three Bedrooms
- Own Drive For Two Cars
- Walking Distance to Station
- Garage
- Very Well Presented
- Close To Schools

