



## 39 Cranford Avenue, Staines-Upon-Thames, TW19 7AH

A three bedroom, two bathroom extended house situated in a popular residential road within easy reach of the local schools, shops, bus routes and overlooking playing fields to the rear. The property benefits from a good size lounge/diner, extended kitchen, very large garden with garage to rear and rear access and loft room with ensuite shower room and fitted cupboards. A very sensibly priced house with further potential to increase value.

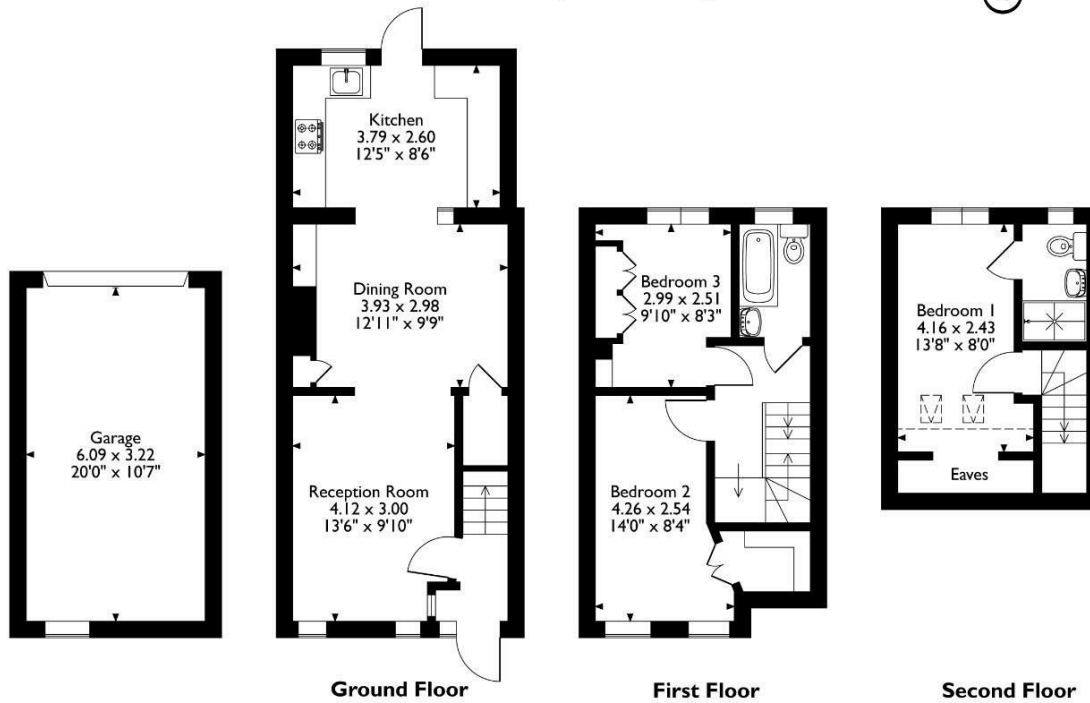


# Floor Plan

39, Cranford Avenue, Staines-upon-Thames, Surrey  
 Approximate Gross Internal Area  
 Main House = 80 Sq M/861 Sq Ft  
 Garage = 20 Sq M/215 Sq Ft  
 Total = 100 Sq M/1076 Sq Ft



Features



Please note that the location of doors, windows and other items are approximate and this floorplan is to be used for illustrative purposes only. Unauthorized reproduction is prohibited.

Aspen Residential Services  
 77 Church Road, Ashford, Surrey, TW15 2PE  
 Tel: 01784 252 202  
 Email: enquiries@aspensalesandlettings.com

