

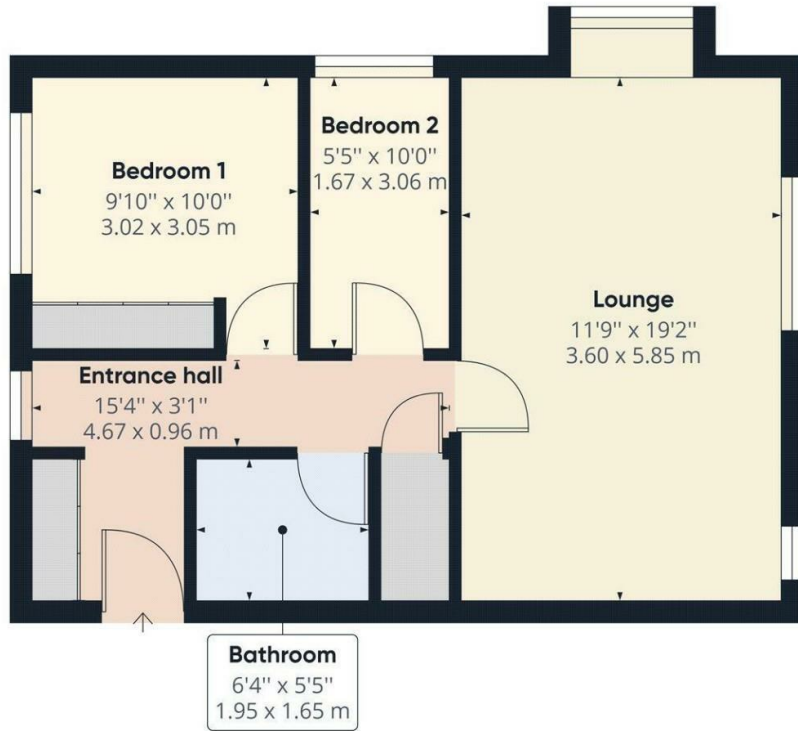


81 Dutch Barn Close, Stanwell, TW19 7NG

A stunning two bedroom ground floor modern apartment situated at the head of this quiet cul de sac conveniently placed for easy access to local shops, transport links and Heathrow. The property has been updated and modernised by the current owners to an exceptional standard and requires an internal inspection to be fully appreciated.



Floor Plan



Approximate total area⁽¹⁾
536.61 ft²
49.85 m²

(1) Excluding balconies and terraces

While every attempt has been made to ensure accuracy, all measurements are approximate, not to scale. This floor plan is for illustrative purposes only.

GIRAFFE360



Features

- Ground Floor Apartment
- Stunning Condition
- Off Street Parking
- Close to Local Shops And Transport Links
- Two Bedrooms
- Cul de Sac Location
- Luxury Fitted Kitchen
- Ideal First Time Buy



