



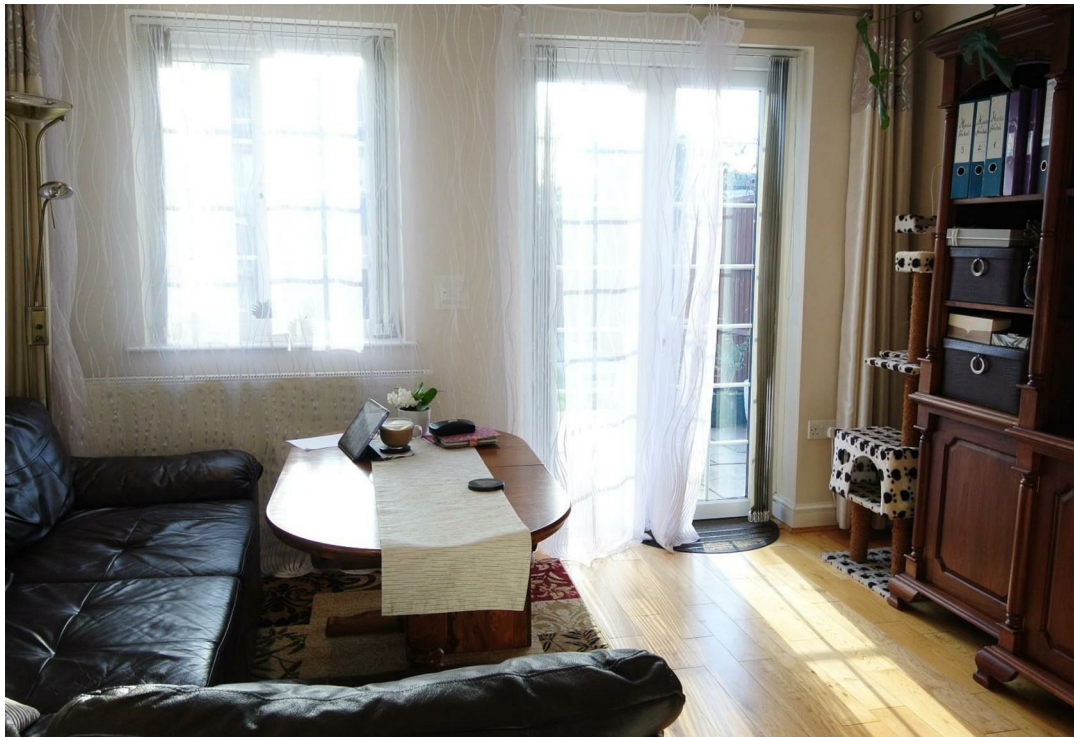
10 Cambridge Road, Ashford, TW15 1UF

£425,000

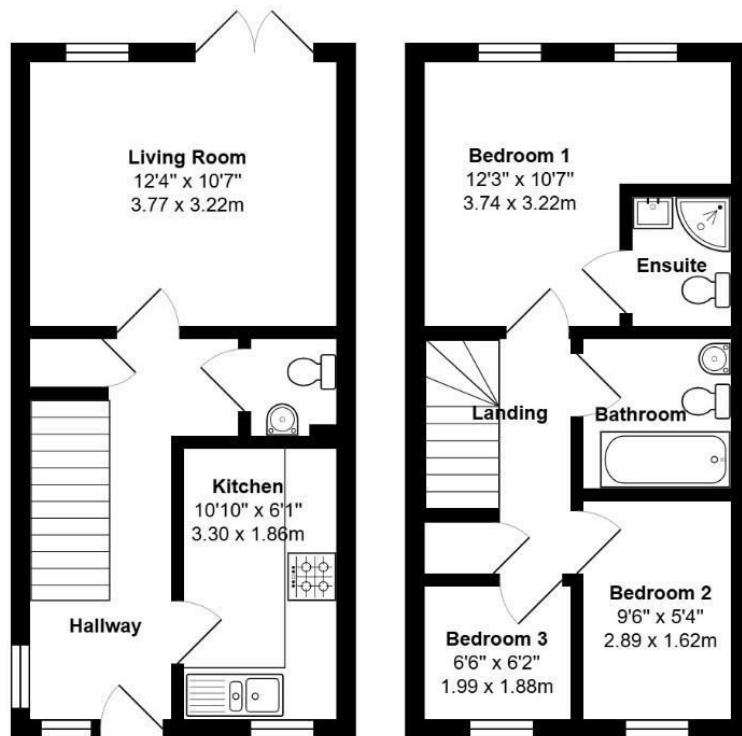


## 10 Cambridge Road, Ashford, TW15 1UF

Detached three bedroom beautifully presented home situated in a quiet residential road. The property benefits from an ensuite shower room to the master bedroom, a three piece family bathroom and a ground floor cloakroom. The modern kitchen is fully equipped with space for dining and a combi boiler and the well maintained garden enjoys a southerly aspect with potential to extend stpp and gated parking for two cars.



## Floor Plan



Cambridge Road, Ashford, TW15 1UF

Total Area: 646 ft² ... 60.0 m²

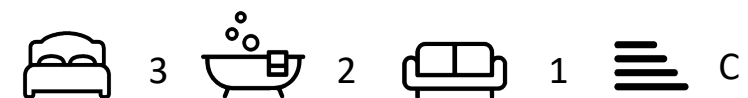
All measurements are approximate and for display purposes only



## Features

- Detached House
- Ensuite Shower Room
- Quiet Residential Road
- Modern Fitted Kitchen
- Three Bedrooms
- Groundfloor Cloakroom
- Well Presented Throughout
- Southerly Facing Garden

Aspen Residential Services  
77 Church Road, Ashford, Surrey, TW15 2PE  
Tel: 01784 252 202  
Email: [enquiries@aspensalesandlettings.com](mailto:enquiries@aspensalesandlettings.com)



Tenure - Freehold Council Tax Band - D



