



25 Orchard Avenue, Ashford, TW15 1JB

£399,000

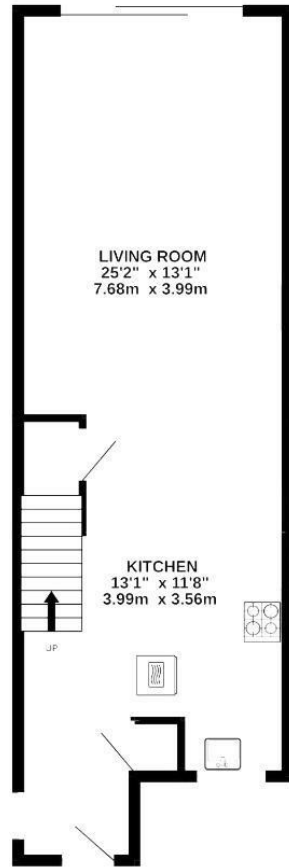
## 25 Orchard Avenue, Ashford, TW15 1JB

An exceptionally well presented two bedroom house situated in a sought after residential location convenient for schools, local shops, transport links and a short distance from Ashford Town Centre. Refurbished by the current owners to a high specification the property benefits from open plan ground floor living accommodation enjoying a modern fitted kitchen and large lounge/ dining room, with two good size bedrooms and first floor three piece family bathroom. Externally you have a private rear garden and off street parking. No Onward Chain.

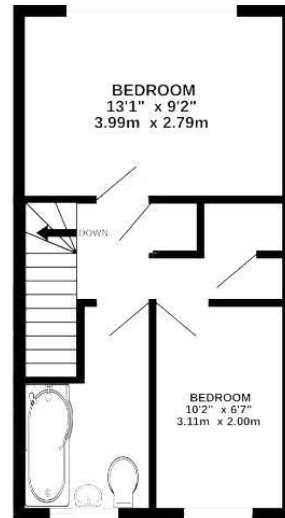


# Floor Plan

GROUND FLOOR  
504 sq ft (46.8 sq m.) approx.



1ST FLOOR  
316 sq ft (29.4 sq m.) approx.



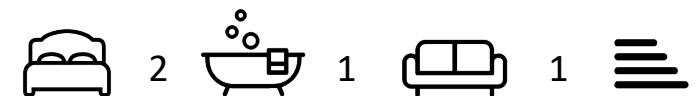
TOTAL FLOOR AREA: 820 sq ft (76.1 sq m.) approx.

While every attempt has been made to ensure the accuracy of the floorplan, contained herein, no responsibility is taken for any errors or omissions. The plan is for illustrative purposes only and should be used as a guide only. The services, systems and appliances shown have not been checked and no guarantee is given. Made with Metropix 12/2023



## Features

- Two Double Bedroom House
- Excellent Condition Throughout
- First Floor Family Bathroom
- Spacious Open Plan Living Accommodation
- Modern Fitted Kitchen
- Private Rear Garden
- Off Street Parking
- No Onward Chain



Aspen Residential Services  
77 Church Road, Ashford, Surrey, TW15 2PE  
Tel: 01784 252 202  
Email: enquiries@aspensalesandlettings.com

