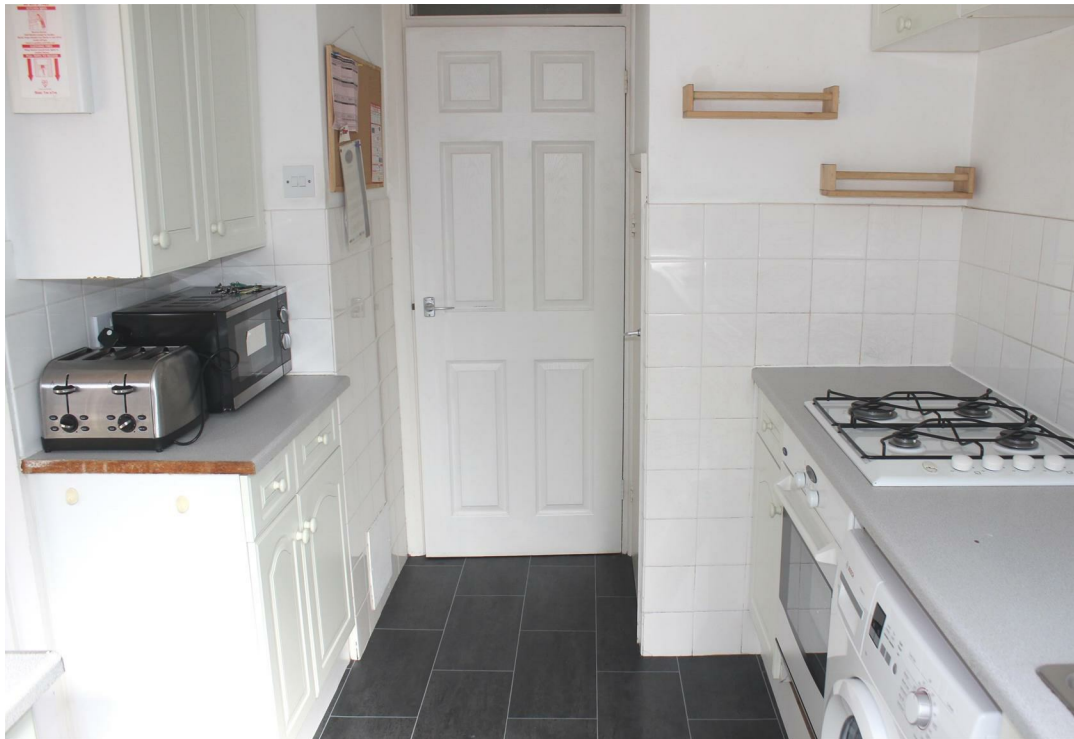


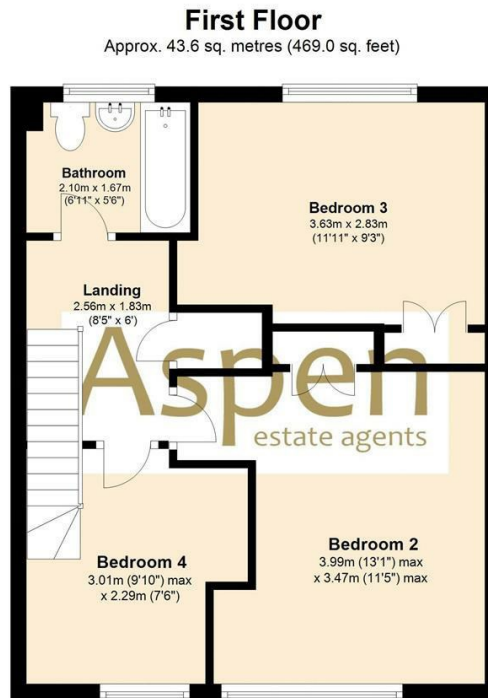


99 Beechtree Avenue, Egham, TW20 0TD

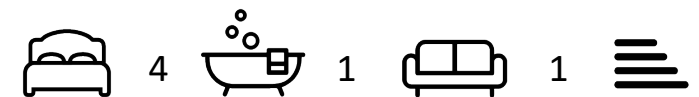
A four bedroom student house offers excellent accommodation to include entrance hall with w/c, communal lounge, kitchen and large double bedroom downstairs; upstairs has two double bedrooms, a large single bedroom and a bathroom. There is an enclosed rear garden. Energy Rating C.



Floor Plan



Features



Tenure - Council Tax Band - D

10 St Judes Road, Englefield Green, Surrey TW20 0BY
Tel 01784 433696
sales@aspenestateagents.co.uk

