



Greenwood Mill House Lane, Egham, TW20 8QR

£450,000

Greenwood Mill House Lane, Egham, TW20 8QR

Nestled on Mill House Lane in the picturesque area of Egham, this charming semi-detached bungalow offers a delightful blend of character and comfort. Built in 1900, the property spans an impressive 1,087 square feet and is ideally situated close to the idyllic village of Thorpe, making it a perfect retreat for those seeking a tranquil lifestyle.

As you approach the home, you will be greeted by a gated entrance that leads to a stylish 'barn style' double carport, providing ample parking for two vehicles, along with a spacious driveway that accommodates several more. The exterior of the property is complemented by extensive gardens that envelop the home, offering far-reaching views of the surrounding farmland, perfect for enjoying the beauty of nature.

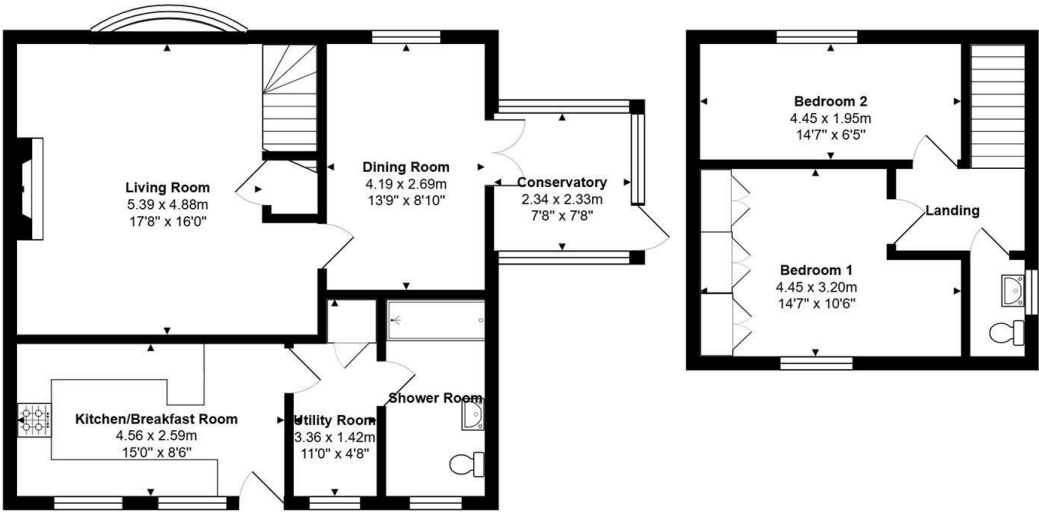
Inside, the bungalow features two well-proportioned bedrooms, a bathroom and additional cloakroom,. The heart of the home is undoubtedly the two reception rooms, one of which is exceptionally large, providing an inviting space for relaxation and entertaining. A charming brick feature fireplace adds a touch of warmth and character, making it an ideal spot for cosy evenings.

This property is a rare find, combining the charm of a period home with the practicality of modern living. Whether you are looking to downsize or seeking a peaceful retreat, this bungalow on Mill House Lane is sure to impress. Don't miss the opportunity to make this delightful home your own.

NO ONWARD CHAIN



Floor Plan



Total Area: 97.5 m² ... 1050 ft²



Features

- Character Cottage
- Kitchen Breakfast Room Plus Utility
- Bathroom & Cloakroom
- Extensive Gardens
- Gated Driveway
- 2-Double Bedrooms
- Two Large Reception Rooms
- Far Reaching Rear Views
- Double Carport
- EPC Rating: D / Council Tax Band: D

10 St Judes Road, Englefield Green, Surrey TW20 0BY
Tel 01784 433696
sales@aspenestateagents.co.uk



Tenure - Freehold Council Tax Band - D

