



Flat 2 32a St. Jude's Road, Egham, TW20 0BY

£1,800 Per Calendar Month

## Flat 2 32a St. Judes Road, Egham, TW20 0BY

This spacious two double bedroom first floor flat is centrally located for the village shops and ideal for someone who works at the university, as it is only a 5-6 minute walk. The village green and Windsor Great Park can also be reached in a 5-10 minute walk and Egham's shops and mainline train station are about 1.25 mile away.

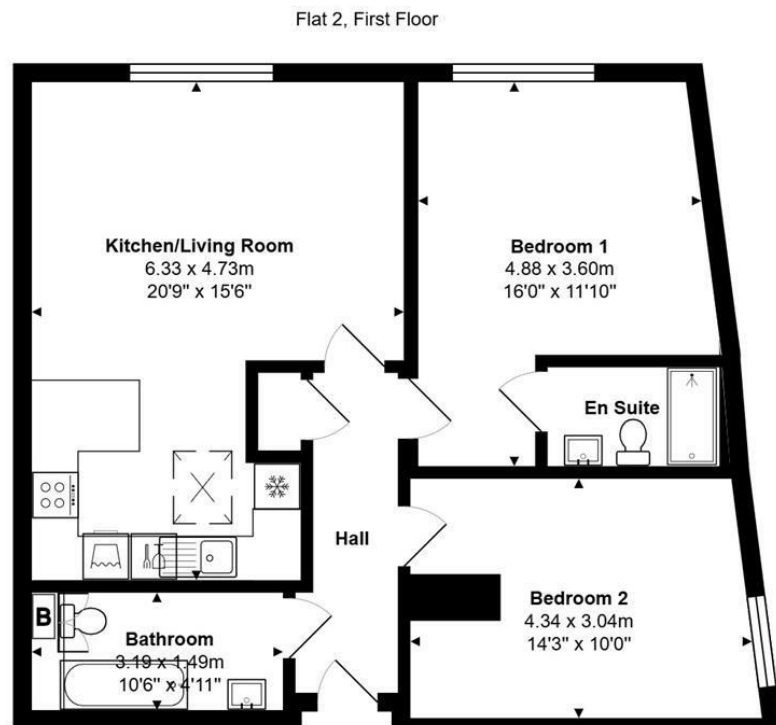
The property has just come to the end of a complete refurbishment/conversion programme so it's almost like walking into a brand new property. The stunning Living room/kitchen has fitted/integrated appliances include oven, hob, washer/dryer, fridge/freezer and a dishwasher. The windows are double glazed and there is a gas central heating system to radiators. There is wood style flooring in the living room/kitchen and bathrooms, with carpeting in the bedrooms. There is one allocated car parking space to the rear.

The property will be available from early November 2025. EPC Rating: B.





# Floor Plan



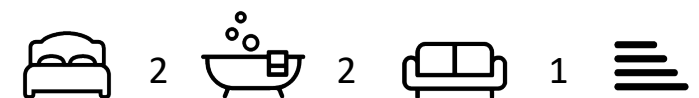
Total Area: 69.2 m<sup>2</sup> ... 745 ft<sup>2</sup>



## Features

- Gorgeous 2 Double Bedroom Flat
- Stunning Living Room/Kitchen
- Main Bedroom with En Suite
- Gas Central Heating to Radiators
- One Allocated Parking Space
- Brand New Conversion
- Fitted Appliances
- Further Bathroom
- Double Glazed Windows
- Un-lived in

10 St Judes Road, Englefield Green, Surrey TW20 0BY  
Tel 01784 433696  
sales@aspenestateagents.co.uk



Tenure - Council Tax Band -

