



16 Laurel Avenue, Englefield Green, TW20 0QE

This three bedroom semi-detached house is set in a quiet residential location, benefitting from its own driveway and garage. It offers a fantastic opportunity for someone to buy and refurbish a property and 'make it their own'!

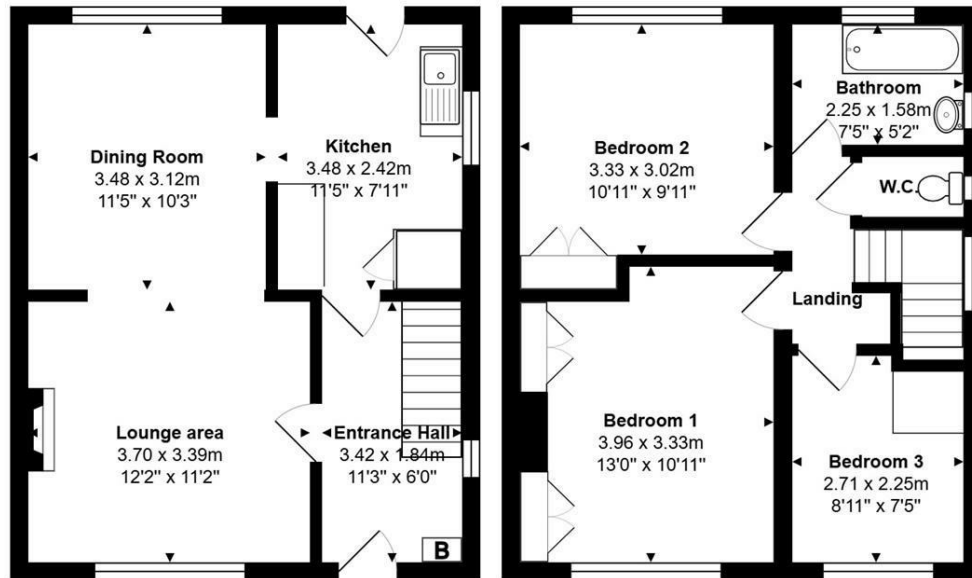
The accommodation comprises an entrance hall, through lounge/dining room, kitchen, landing two double and 1 single bedroom and a bathroom/separate w.c. There is a gas central heating system to radiators and double glazed windows, though the property is in need of full modernisation, which is reflected in the asking price.

Englefield Green is a popular village with the lovely village green about a 5 minute walk. There is a good array of local shops, with Egham's shopping center and mainline train station about 1.25 miles away.

EPC Rating: D.



Floor Plan



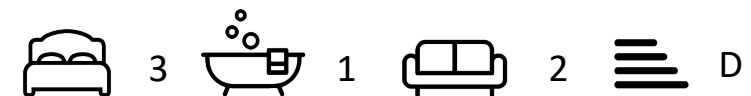
Total Area: 79.6 m² ... 857 ft²



Features

- Three Bedrooms
- In Need of Modernisation
- Kitchen
- Gas C.H. & D' Glazing
- Good Size Garden
- Semi-Detached House
- Two Reception Rooms
- Upstairs Bathroom
- Own Drive & Garage
- No Chain

10 St Judes Road, Englefield Green, Surrey TW20 0BY
Tel 01784 433696
sales@aspenestateagents.co.uk



Tenure - Freehold Council Tax Band - D

