



12a The Grove, Egham, TW20 9QJ

£1,350 PCM

## 12a The Grove, Egham, TW20 9QJ

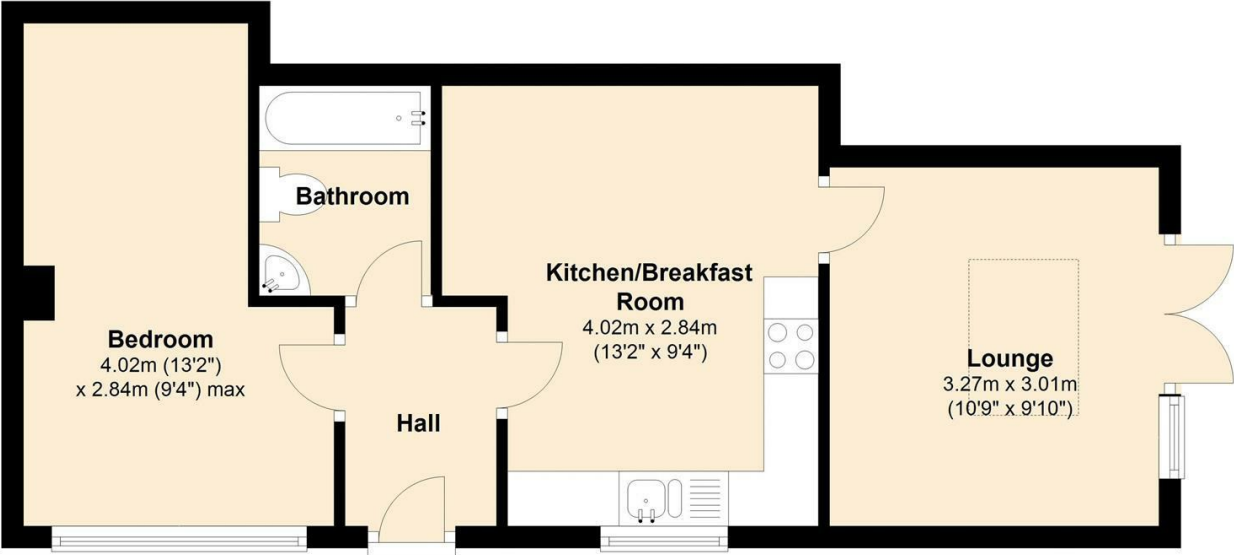
STUDENT OR RESI LET AVAILABLE 1st MAY on 14 Month Tenancy. This one bedroom ground floor student rental flat is situated in a great central Egham location, just across the road from Waitrose and about a 3-4 minute walk from the train station. There is a lounge with access onto a small rear garden, large kitchen/breakfast room and a white bathroom suite. There is a gas central heating system to radiators, double glazing throughout and off road parking for 1 car.



Floor Plan

Ground Floor

Approx. 39.3 sq. metres (422.8 sq. feet)



Features

- Ground Floor Flat
- Large Kitchen/Breakfast Room
- Private Rear Garden
- Double Glazing
- Close to Shops
- One Bedroom
- Lounge
- Gas Central Heating
- Off Road Parking for 1
- 3-4 Minute Walk to Station



Tenure - Council Tax Band -

