





# Flat 9 Chilbolton Middle Hill, Englefield Green, TW20 0JQ

This charming one double bedroom first floor flat is set in a prime residential road on the Egham/Englefield Green borders, with the advantage of its own garage.

Located just half a mile or so from Egham's mainline train station (Waterloo approx. 42 minutes'), this well-presented first floor flat is one of just four, offering a perfect blend of comfort and convenience and set on a secluded plot with enclosed gardens.

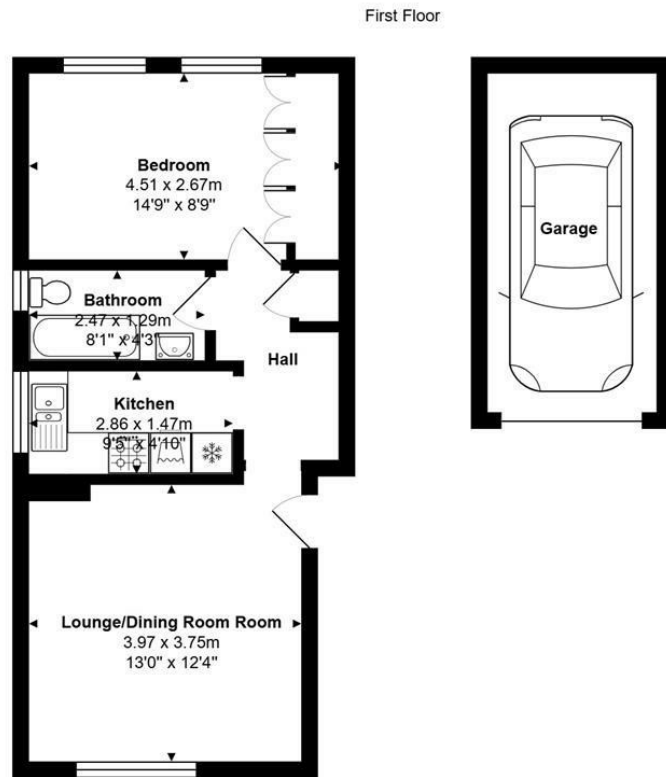
The property features a bright and airy living space, a kitchen with fitted appliances, a generously sized double bedroom with built-in storage, and two windows overlooking the gardens, whilst the bathroom is clean and functional, with a full bath and shower.

Residents enjoy access to the well-maintained communal garden, ideal for b-b-q's and relaxing outdoors. With easy access to local shops, cafes, and transport links, this flat is perfect for commuters, first-time buyers, or investors alike.

There is no onward chain and an EPC rating of C.



# Floor Plan



Total Area: 41.3 m<sup>2</sup> ... 444 ft<sup>2</sup> (excluding garage)



## Features

- First Floor Flat With Garage
- Prime Residential Location
- Lounge/Diner
- Double Bedroom
- Gas Central Heating System
- Small Block of Four Flats
- 15 minute Walk to Station
- Separate Kitchen
- Bathroom with Window
- Secluded Communal Gardens



