



15 St Judes Road, Englefield Green, TW20 0BY

£445,000

15 St Judes Road, Englefield Green, TW20 0BY

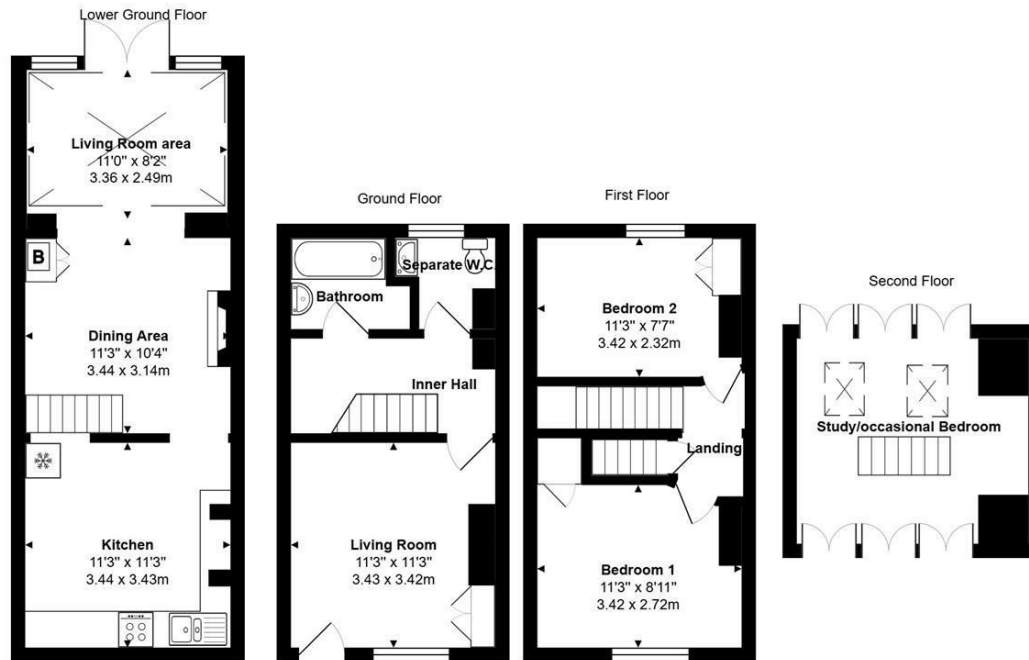
A two/three bedroom character house situated in the heart of the popular village of Englefield Green, just a stone's throw of the shops and a 6-7 minute walk to the village green. The property could be ideal for a first time buyer, downsizer or investment buyer (with the university just a 6-7 minute walk), with similar properties recently sold to such people.

There is interest to be found on each floor, with the lower ground floor having a fitted kitchen and a lounge/dining room with part glazed roof. On the ground floor is a reception room, bathroom and separate cloakroom, whilst the first floor has two good sized bedrooms. There is also a loft room which some may utilise as an occasional bedroom or office, with more people working from home these days.

The property benefits from a gas central heating system to radiators, double glazed windows and a large rear garden. A 12 month parking permit for an off road car parking space is available at a cost of just £130. Energy Rating D.



Floor Plan



Total Area: 1005 ft² ... 93.4 m²



Features

- Character cottage
- Super Lounge/Dining Room
- Further Reception Room/Bedroom
- Bathroom & Separate Cloakroom
- Close to Shops & Village Green
- Two/Three Bedrooms
- Fitted Kitchen
- Two Good Sized Bedrooms
- Good Size Loft Room/Office
- No Onward Chain

10 St Judes Road, Englefield Green, Surrey TW20 0BY
Tel 01784 433696
sales@aspenestateagents.co.uk



Tenure - Freehold Council Tax Band - D

