



53 New Road, Staines-upon-Thames, TW18 3DA

£400,000

53 New Road, Staines-upon-Thames, TW18 3DA

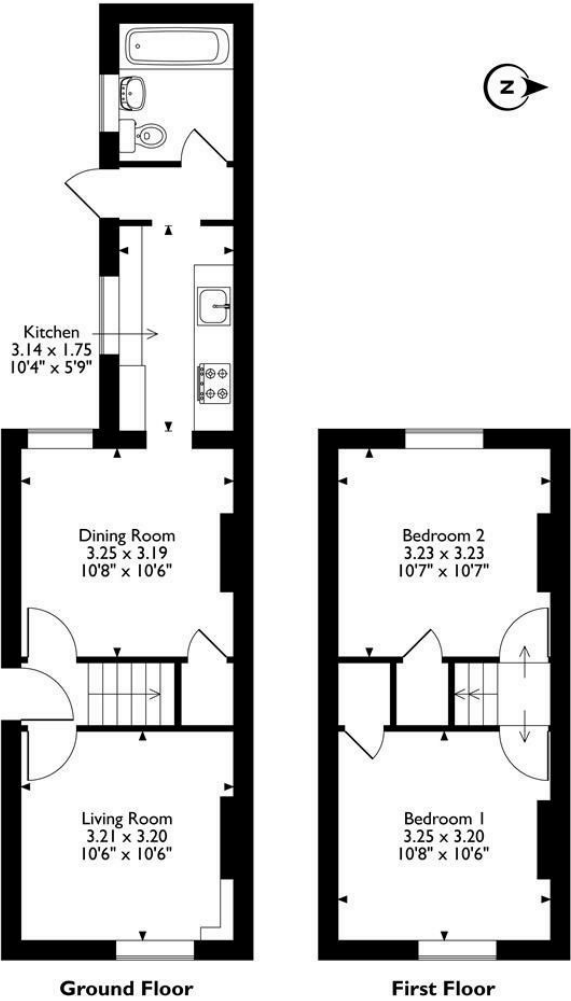
Nestled on the charming New Road, Staines, this delightful two-bedroom semi-detached Victorian cottage is perfectly positioned between Staines and Egham, offering the ideal blend of convenience and character. From the moment you step inside, it's clear the current owners have thoughtfully invested in creating a warm and inviting home. The ground floor boasts two reception rooms, including a cozy front living room and a spacious rear dining room, perfect for entertaining or unwinding after a busy day. The recently renovated kitchen impresses with ample storage and worktop space, while the modern, fully tiled bathroom features a sleek three-piece suite with a shower over the bath, combining practicality with style.

Upstairs, two beautifully decorated double bedrooms provide peaceful retreats, each showcasing tasteful décor and plenty of natural light. Outside, the property truly shines with its stunning 100ft rear garden, primarily laid to lawn and complete with a lovely decking area, ideal for al fresco dining or enjoying the sunshine. This charming home is already generating significant interest, and viewings are highly recommended. Don't miss the opportunity to make this gorgeous property your own – contact Aspen Estate Agents today to arrange a viewing.



Floor Plan

53, New Road, Staines-upon-Thames, Surrey
Approximate Gross Internal Area
60 Sq M/646 Sq Ft



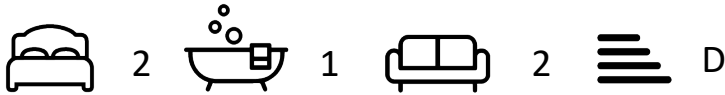
Please note that the location of doors, windows and other rooms are approximate and this floorplan is to be used for illustrative purposes only. Unauthorized reproduction is prohibited.



Features

- Prime Location: Situated on New Road, perfectly positioned between Staines and Egham.
- Welcoming Interiors: Two reception rooms, including a cozy front living room and a spacious rear dining room.
- Beautiful Bedrooms: Two tastefully decorated double bedrooms with plenty of natural light.
- Victorian Charm: Delightful two-bedroom semi-detached cottage with character and style.
- Modern Features: Recently renovated kitchen with ample storage and worktop space, plus a sleek, fully tiled bathroom with a three-piece suite and shower over the bath.
- Stunning Garden: 100ft rear garden, mainly laid to lawn, with a lovely decking area ideal for outdoor enjoyment.

10 St Judes Road, Englefield Green, Surrey TW20 0BY
Tel 01784 433696
sales@aspenestateagents.co.uk



Tenure - Freehold Council Tax Band - C

