



Flat 6 One High Street, Egham, TW20 9HH

£335,000



# Flat 6 One High Street, Egham, TW20 9HH

This luxurious first floor apartment is located conveniently to Egham Town and Train Station and is set within a collection of just 16 apartments combining contemporary styled architecture.

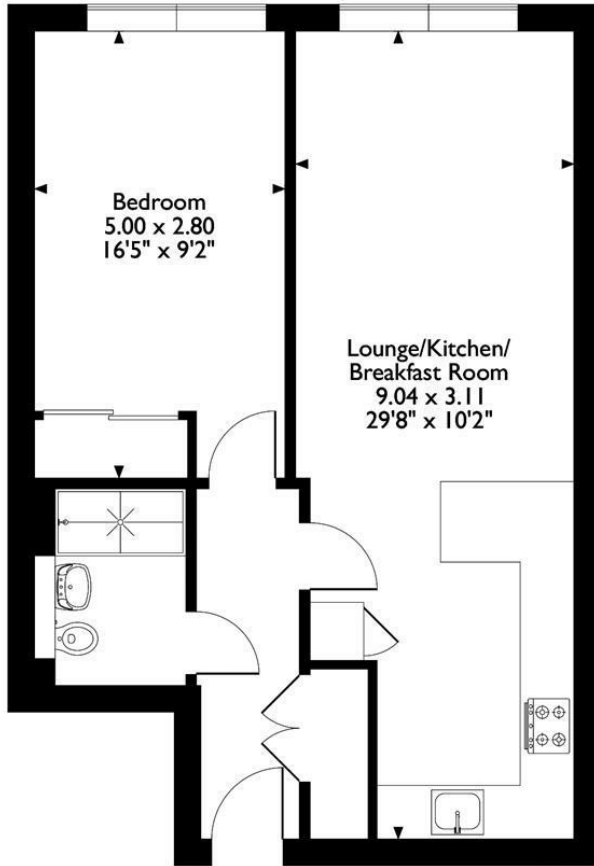
The property enjoys an elegant open plan living area including a state-of-the-art kitchen with granite worktop, breakfast bar, integrated Bosch hob and oven, integrated fridge/freezer, slimline dishwasher and washer/dryer in the utility cupboard. There is premium Amtico flooring throughout the reception room and hallway. The bedroom has fitted wardrobes with internal chest of drawers and a very useful office area. There is a quality bathroom which incorporates Geberit and Hansgrohe fittings in the walk-in shower with mains pressured hot water, chrome heated towel rail and shaver sockets.

Further benefits include an allocated off-road parking space, secure bike store, energy efficient mechanical ventilation heat recovery system, LED downlights throughout, TV/satellite points to living area and bedroom, high security entrance door with multi point locking system, high standard and maintenance of communal areas and landscaped outdoor areas. Also the windows are triple glazed, adding to the excellent energy efficiency, contributing to the EPC Rating: B.



# Floor Plan

One, Flat 6, High Street, Egham  
Approximate Gross Internal Area  
51 Sq M/552 Sq Ft



Please note that the location of doors, windows and other items are approximate and this floorplan is to be used for illustrative purposes only. Unauthorized reproduction is prohibited.



## Features

- Contemporary styled apartment
- Located close to Town and Train Station
- Elegant open plan living
- Secure bike store
- State of art kitchen
- Stunning bathroom
- Allocated off road parking space
- Lift in Block





