



11 Sovereign Heights, Slough, SL3 8PZ

£274,950



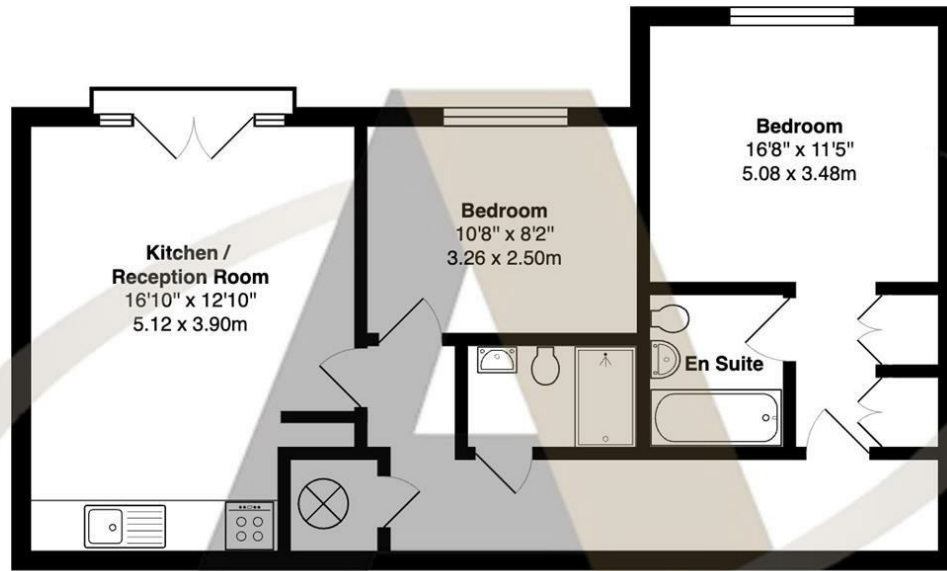
# 11 Sovereign Heights, Slough, SL3 8PZ

Aspen Estate Agents are delighted to introduce this charming property located in the prestigious Sovereign Heights in Slough. This delightful apartment boasts a cozy reception room, two bedrooms, and two bathrooms one being an en suite bathroom in the principal bedroom which also has built in storage.

Built in 2003, this property features a modern design and well-maintained grounds. Spanning 700 sq ft, this first-floor apartment offers a spacious layout that is both practical and stylish and the secure gated parking provides peace of mind and convenience. Offered to the market with a long lease don't miss the opportunity to make this lovely property your new home. Contact Aspen Estate Agents today to arrange a viewing.



# Floor Plan



## Sovereign Heights

Total Area: 661 ft<sup>2</sup> ... 61.4 m<sup>2</sup>

All measurements are approximate and for display purposes only



## Features

- Charming property located in prestigious Sovereign Heights, Langley.
- Open Plan Kitchen / Reception Room
- Offered with a long lease; contact Aspen Estate Agents to arrange a viewing
- Cozy reception room, two bedrooms, and two bathrooms
- Secure gated parking for peace of mind and convenience.
- Built in 2003, featuring modern design and well-maintained grounds.



