



38 Queenswood Crescent, Englefield Green, TW20 0AR

£750,000

38 Queenswood Crescent, Englefield Green, TW20 0AR

The development of Virginia Gate was built in 2017 by Cala Homes and is approached from Wick Road which has several access points into Windsor Great Park – a love for locals and non-locals alike, with its superb walking and cycling and where attractions include Valley Gardens, the Punch Bowl, Savill Gardens, the obelisk, totem pole and Smith's Lawn, not forgetting the lake itself.

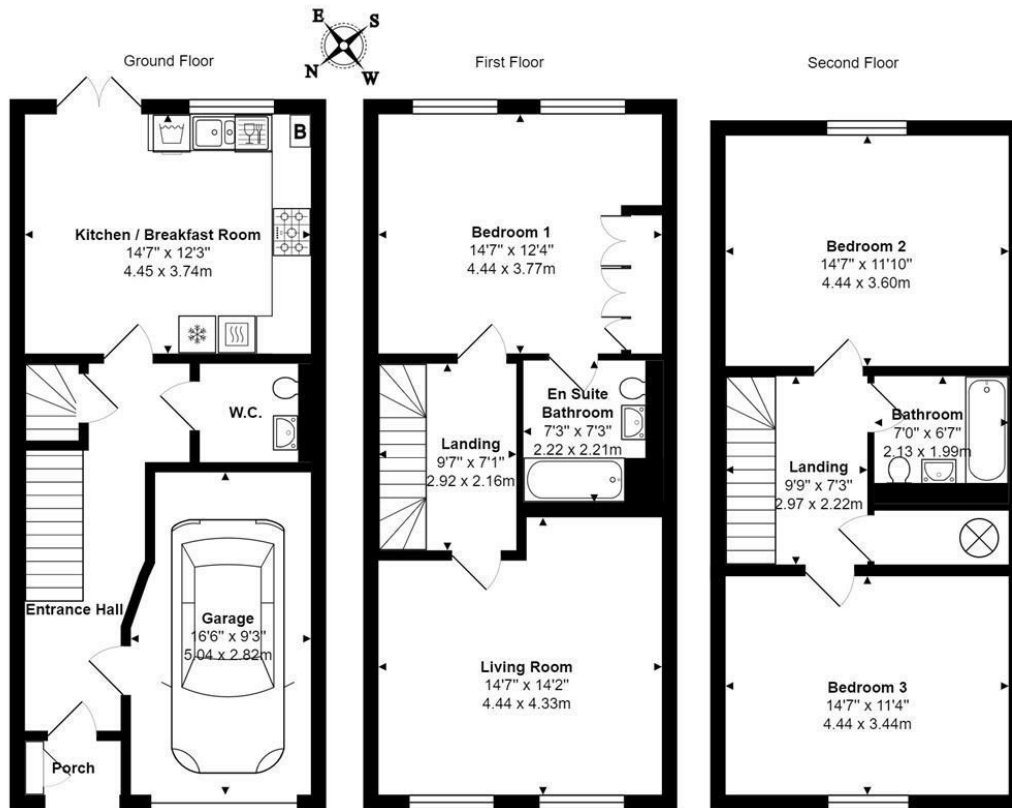
For those with ease of maintenance in mind this 3 double bedroom end of terrace property was purchased as a new build 6 years ago. The owner was attracted by its spacious rooms and its layout over three floors. The house would suit a young family, a couple working from home, or even those downsizing; they surely will appreciate the well-proportioned rooms. The accommodation, including the integral garage with electric door, exceeds 1,500 square feet and is presented to a good standard, with Sonos speakers in the kitchen, living room, master bedroom & ensuite.

The ground floor offers a well appointed cloakroom and a fully fitted kitchen/breakfast room with ZIP hot water tap and integrated appliances including a washer/dryer, full size dishwasher and wine fridge, ovens, hob, extractor fridge/freezer and has doors onto the rear garden. The first floor has a large living room and a big master bedroom with ensuite bathroom. The second floor boasts two further bedrooms serviced by a family bathroom. There is a rear garden with lawn & patio and to the front is a driveway leading to the garage.

Englefield Green village benefits from excellent transport links to London and the south east with easy access to the M25, M4 and M3. London Heathrow Airport (10 mins) and London Gatwick (40mins) are also within easy reach. Egham train station provides regular service to London Waterloo (approx. 40 mins). There is excellent state schooling in the area and ACS (the American Community School) is within walking distance, with Bishopsgate School & St Johns Beaumont being about 1 mile away. EPC Rating: B.



Floor Plan



Total Area: 1500 ft² ... 139.3 m²



Features

- Cala Homes Built in 2017
- Kitchen/Breakfast Room
- Living Room
- Family Bathroom
- Gas C.H. & D' Glazing
- 3 Large Double Bedrooms
- Downstairs Cloakroom
- EnSuite to Master Bedroom
- Garage & Drive
- Edge of Windsor Great Park

10 St Judes Road, Englefield Green, Surrey TW20 0BY
 Tel 01784 433696
 sales@aspenestateagents.co.uk

