



7 The Grove, Egham, TW20 9QJ

£460,000

7 The Grove, Egham, TW20 9QJ

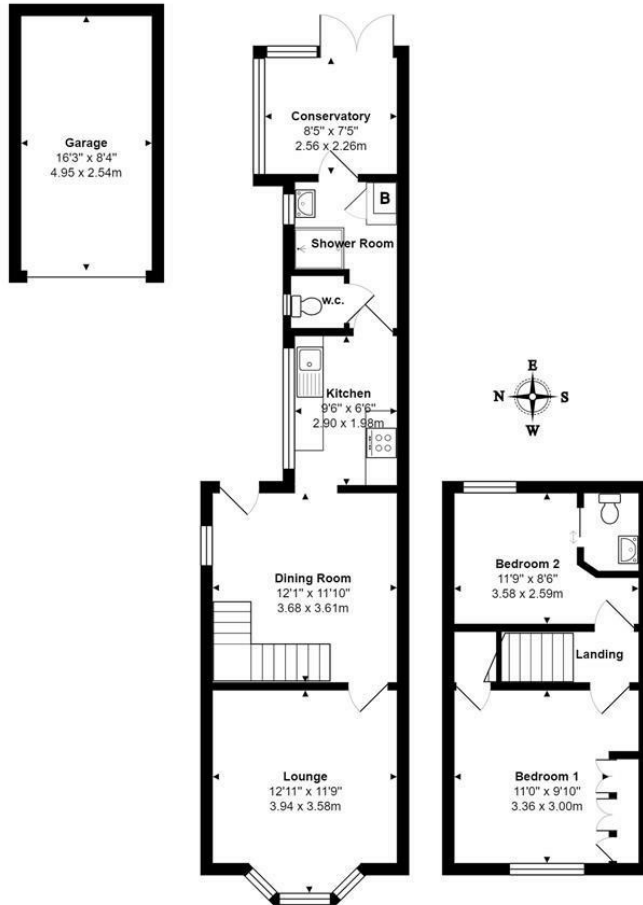
This two bedroom semi-detached Victorian villa is situated in a quiet road, within a few minutes' walk of Egham's wide variety of shops, restaurants and pubs. The mainline train station (Waterloo approximately 40-45 minutes) is about a 5 minute walk, the Everyman cinema less and the doctors' surgery is within one hundred meters.

The property itself is well presented, with two good size reception rooms, kitchen, downstairs shower room and a small conservatory onto the rear garden area. Upstairs is a large double bedroom with fitted wardrobes and a smaller double with en suite cloakroom. The house has double glazed windows, gas central heating system to radiators and, as well as the off road parking for 2 cars, there is a garage!

There is no onward chain with this property, so could well suit those wanting a quick move. EPC Rating: D.



Floor Plan



Total Area: 896 ft² ... 83.2 m²



Features

