



11 Dencliffe Church Road, Ashford, TW15 2PF

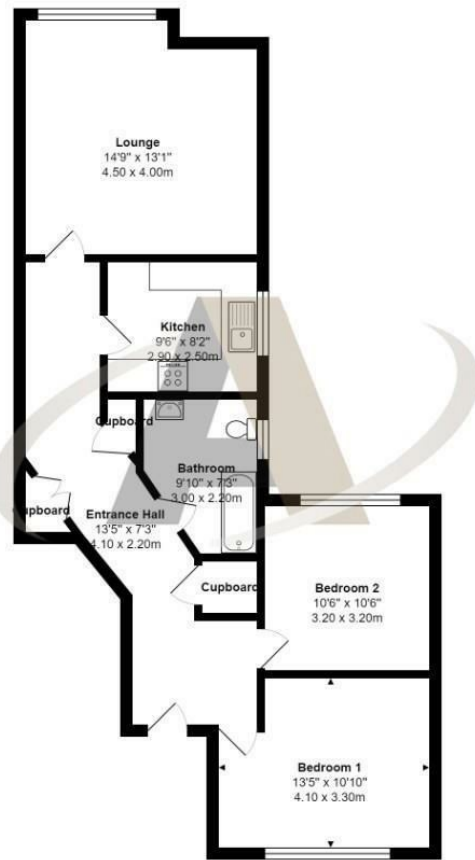
£1,450 Per Month

11 Dencliffe Church Road, Ashford, TW15 2PF

Located within the heart of Ashford Town Centre is this spacious two double bedroom second-floor apartment. The property offers; secure communal entry with own door to; an entrance hall with storage, a large living room, good size kitchen with appliances, a bathroom, and two double bedrooms. Centrally located close to Ashford's shops and transport links. Viewings are highly recommended! Available November 2024 on an UNFURNISHED basis.



Floor Plan



Church Road, Ashford

Total Area: 837 ft² ... 77.8 m²

All measurements are approximate and for display purposes only



Features

- UNFURNISHED
- Double Glazing
- Secure Entry
- Bathroom
- Fitted Kitchen with Appliances
- Two Bedrooms
- Town Centre Location
- First Floor Apartment
- Spacious Reception Room
- AVAILABLE NOVEMBER 2024

