



18 Ashford Crescent, Ashford, TW15 3ED

Aspen Estate Agents are delighted to introduce this stunning 3/4-bedroom detached house in Ashford Crescent, Ashford to the market. Boasting a contemporary design, this property has been meticulously renovated and extended, offering a seamless blend of style and functionality.

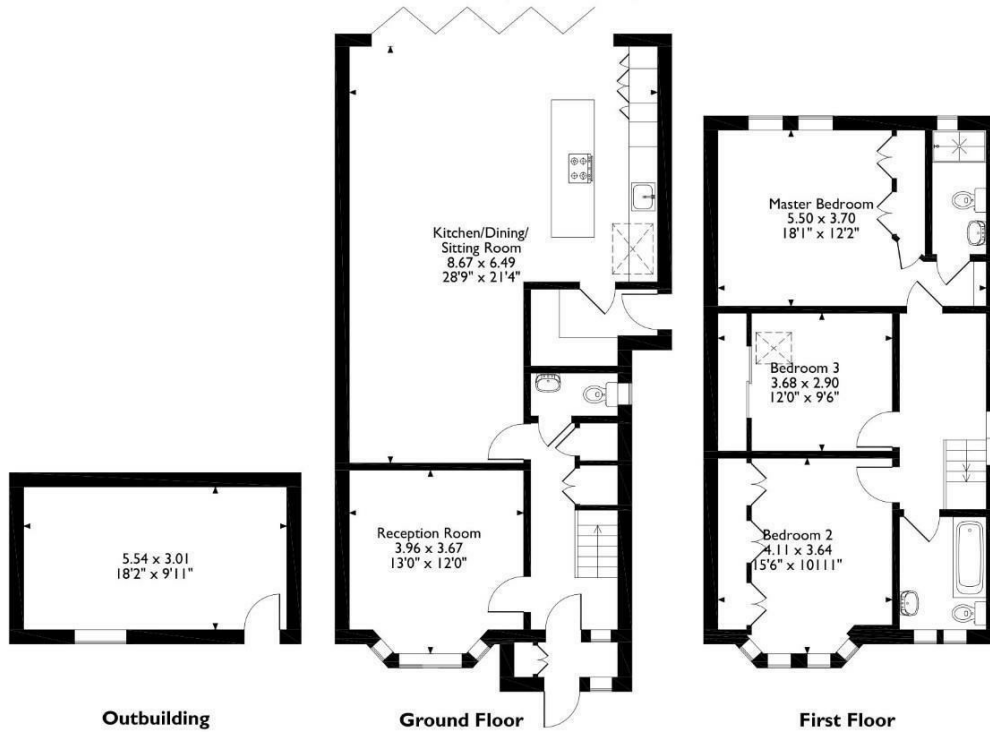
Upon entering this property it is immediately obvious that no expense has been spared by the current owners. Accommodation comprises; an inviting living space featuring a spacious kitchen, dining, and family room, perfect for both entertaining and everyday living, a versatile reception room that could serve as a fourth bedroom, a downstairs WC, and a utility room. The beautiful kitchen is complete with ample storage, stone countertops, integrated appliances, and a convenient island. Bi-folding doors seamlessly connect the indoor and outdoor living spaces, leading to a generously sized garden with a patio and lawn. Upstairs there is a master suite with a stunning en suite shower room, two more double bedrooms, and a family bathroom., Outside, with the rear garden there is a large outbuilding that offers endless possibilities as a gym, home office, or studio, while a block-paved driveway provides parking for two cars to the front.

Ashford Crescent is a popular residential location as it offers easy access to Ashford train station, other transport links, Ashford High Street, and some of the area's popular schools all of which are just a short walk away. This property should be seen to be appreciated and viewings can be booked by calling Aspen Estate Agents.



Floor Plan

18 Ashford Crescent, Ashford, Surrey
 Approximate Gross Internal Area
 Main House = 138 Sq M/1486 Sq Ft
 Outbuilding = 17 Sq M/183 Sq Ft
 Total = 155 Sq M/1669 Sq Ft



Please note that the location of doors, windows and other items are approximate and this floorplan is to be used for illustrative purposes only. Unauthorized reproduction is prohibited.



Features

