



15 Great Charta Close, Englefield Green, TW20 0GL

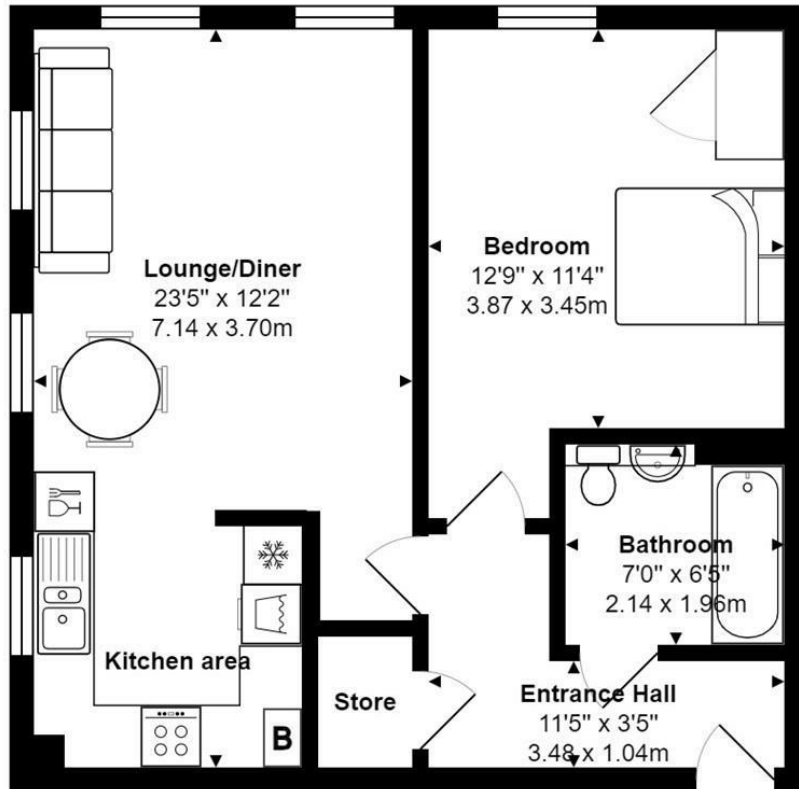
£285,000

## 15 Great Charta Close, Englefield Green, TW20 0GL

Aspen Estate Agents are delighted to introduce this stunning second floor apartment, on the exclusive Great Charta Close Development, built just seven years ago and set in the wonderful location of Coopers Hill Lane. It has a video entry-phone system with either stairs or a lift leading to the second floor; here there is a front door leading to the well arranged accommodation comprising an entrance hall with large storage/linen cupboard, a big living room with space for a dining table and a double aspect with plenty of windows letting in lots of light. There is a good sized and beautifully fitted kitchen with built in and integrated appliances, large double bedroom with fitted wardrobes and a big bathroom. The windows are double glazed and there is gas central heating to radiators. There is further storage available in the loft and there is an allocated car parking space. This property will make an amazing first time buy, equally would suit a 'downsizer' or investment buyer and the Energy Rating of 'B' will of course be beneficial. Please call us ASAP to arrange a viewing. EPC Rating: B.



# Floor Plan



## Features

- Top Floor Apartment with Lift
- Wonderful Location
- Lovely Lounge/Diner
- Fully Fitted Kitchen
- Large Double Bedroom
- Modern Bathroom Suite
- Double Glazed Windows
- Gas Central Heating
- Allocated Parking
- Long Lease

