



Pegasus Court Albany place, Egham, TW20 9HW

£250,000



## Pegasus Court Albany place, Egham, TW20 9HW

AMAZING VALUE FOR MONEY!! This two double bedroom first floor retirement apartment is situated at the rear of this lovely central Egham development, just a short walk to the main shops and train station and with the advantage of a lift. Other benefits include a guest bedroom suite that can be hired for relatives at a small additional price, a crafts room, laundry room and a well appointed residents' lounge.

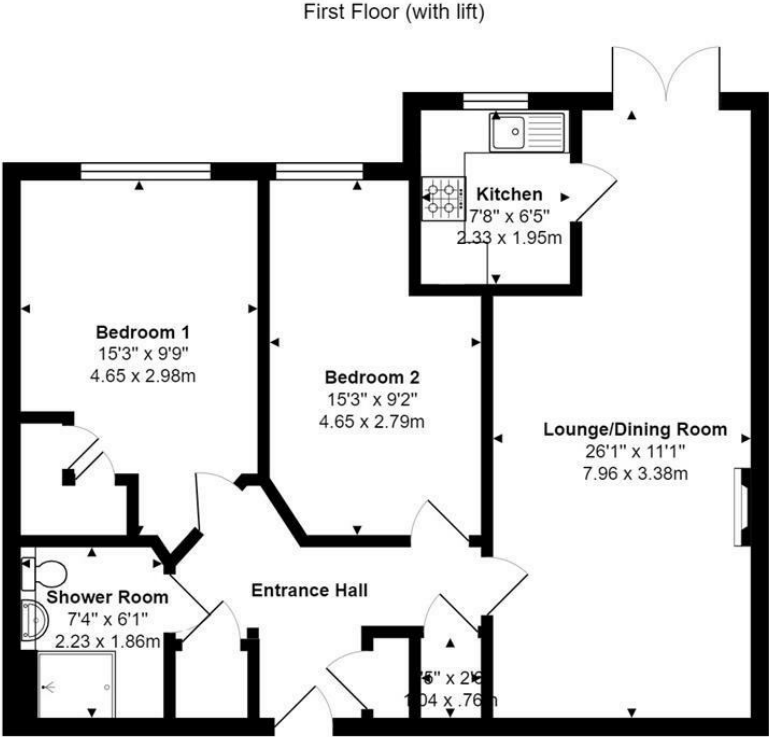
The accommodation is well laid out and comprises: entrance hall, large lounge/dining room. kitchen, two double bedrooms with fitted wardrobes and a good size shower room. There is electric heating, double glazing and residents' parking area. There are lovely communal garden and patio areas where one can sit out and enjoy the sun or shade as desired.

Egham's shops & restaurants are within a short walk, and the mainline train station about a 10 minute walk with access to London Waterloo in around 35/40 minutes.

There is no onward chain, so a quick move can be given. EPC Rating: B.



Floor Plan



Total Area: 768 ft² ... 71.4 m²



Features

- First Floor Retirement Flat
- Two Double Bedrooms
- Kitchen
- Double Glazed
- Communal Gardens
- Lift Access
- Large Lounge/Diner
- Bathroom
- Residents' parking
- Short Walk to Egham's Shops





